

DPP9 RABBIT PAB

货号: S221922

产品全名: DPP9 兔多抗

基因符号: DP9; DPLP9; DPRP2; DPRP-2

UNIPROT ID: Q86TI2 (Gene Accession - NP_631898)

背景: This gene encodes a protein that is a member of the S9B family in clan SC of the serine proteases. The protein has been shown to have post-proline dipeptidyl aminopeptidase activity, cleaving Xaa-Pro dipeptides from the N-termini of proteins. Although the activity of this protein is similar to that of dipeptidyl peptidase 4 (DPP4), it does not appear to be membrane bound. In general, dipeptidyl peptidases appear to be involved in the regulation of the activity of their substrates and have been linked to a variety of diseases including type 2 diabetes, obesity and cancer. Several transcript variants of this gene have been described but not fully characterized.

抗原: Synthetic peptide of human DPP9

经过测试的应用: ELISA, IHC

推荐稀释比: IHC: 20-100; ELISA: 5000-10000

种属反应性: Rabbit

克隆性: Rabbit Polyclonal

亚型: Immunogen-specific rabbit IgG

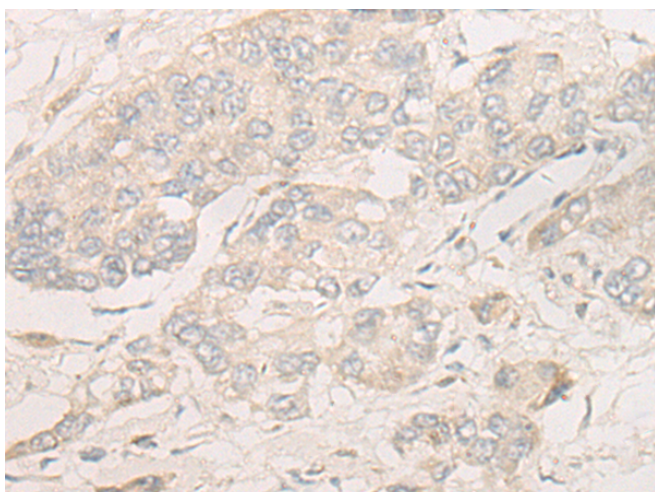
纯化: Antigen affinity purification

种属反应性: Human

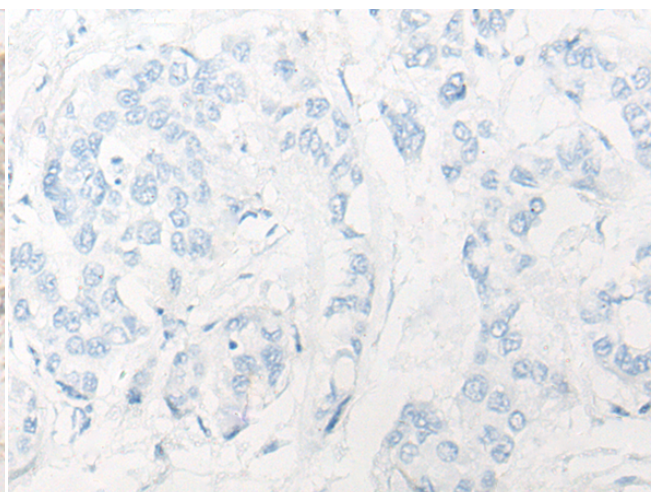
成分: PBS (without Mg²⁺ and Ca²⁺), pH 7.4, 150 mM NaCl, 0.05% Sodium Azide and 40% glycerol

研究领域: Metabolism

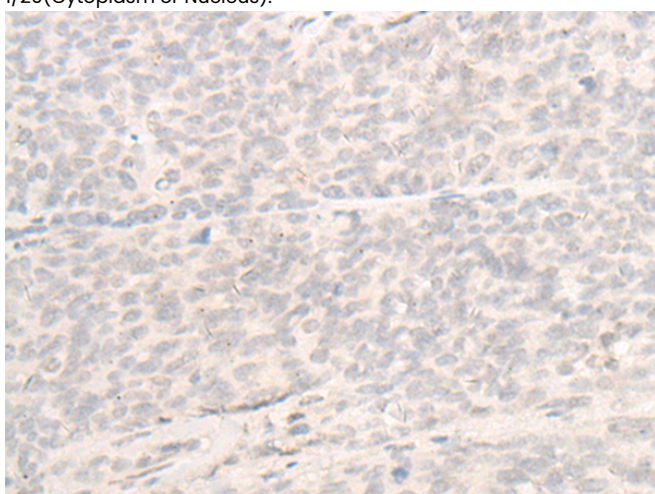
储存和运输: Store at -20°C. Avoid repeated freezing and thawing



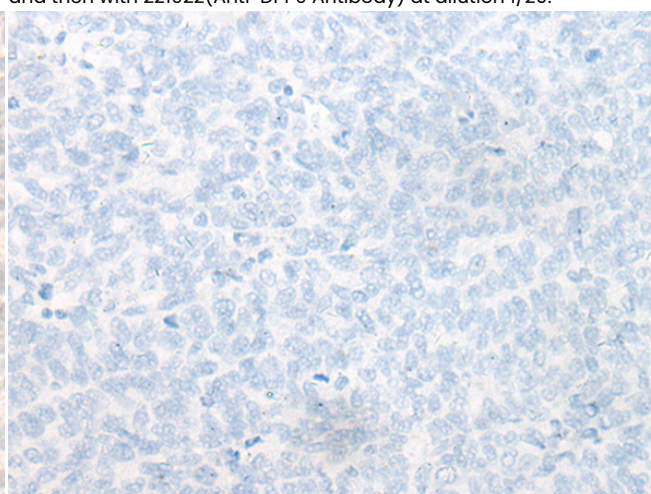
Immunohistochemistry analysis of paraffin embedded Human liver cancer tissue using 221922(DPP9 Antibody) at a dilution of 1/20(Cytoplasm or Nucleus).



In comparison with the IHC on the left, the same paraffin-embedded Human liver cancer tissue is first treated with the synthetic peptide and then with 221922(Anti-DPP9 Antibody) at dilution 1/20.



The image on the left is immunohistochemistry of paraffin-embedded Human ovarian cancer tissue using 221922(Anti-DPP9 Antibody) at a dilution of 1/20.



In comparison with the IHC on the left, the same paraffin-embedded Human ovarian cancer tissue is first treated with synthetic peptide and then with D263739(Anti-DPP9 Antibody) at dilution 1/20.



Product Description

Pioneering GTPase and Oncogene Product Development since 2010
