

DOCK9 RABBIT PAB

货号: S221918

产品全名: DOCK9 兔多抗

基因符号: ZIZ1; ZIZIMIN1

UNIPROT ID: Q9BZ29 (Gene Accession - NP_056111)

背景: Guanine nucleotide-exchange factor (GEF) that activates CDC42 by exchanging bound GDP for free GTP. Overexpression induces filopodia formation.

抗原: Synthetic peptide of human DOCK9

经过测试的应用: ELISA, IHC

推荐稀释比: IHC: 20-100; ELISA: 5000-10000

种属反应性: Rabbit

克隆性: Rabbit Polyclonal

亚型: Immunogen-specific rabbit IgG

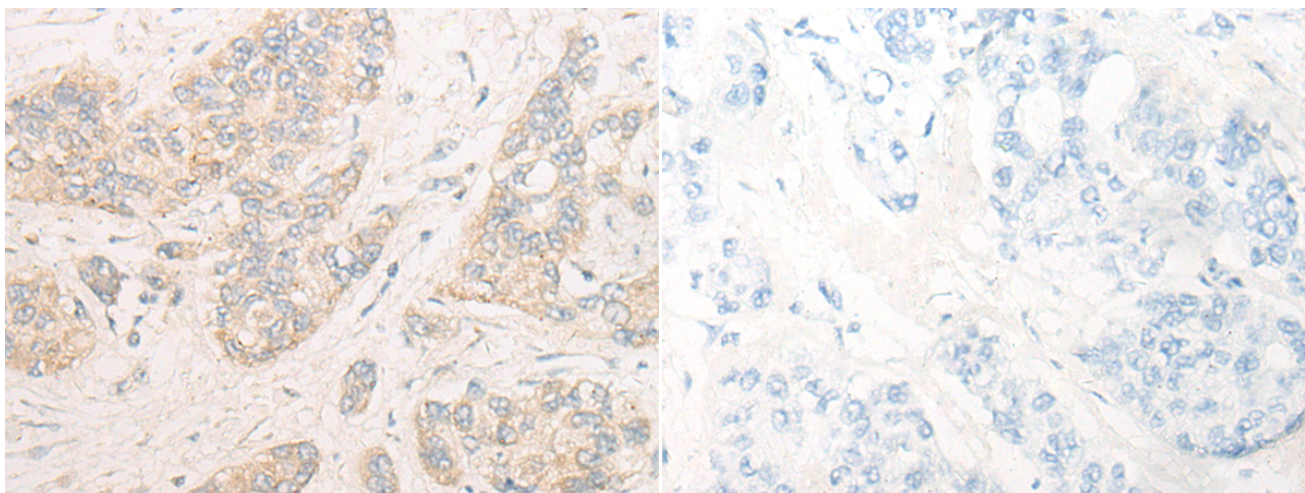
纯化: Antigen affinity purification

种属反应性: Human

成分: PBS (without Mg²⁺ and Ca²⁺), pH 7.4, 150 mM NaCl, 0.05% Sodium Azide and 40% glycerol

研究领域: Signal Transduction

储存和运输: Store at -20°C. Avoid repeated freezing and thawing



Immunohistochemistry analysis of paraffin embedded Human liver cancer tissue using 221918(DOCK9 Antibody) at a dilution of 1/20(Cytoplasm and Cell membrane).

In comparison with the IHC on the left, the same paraffin-embedded Human liver cancer tissue is first treated with the synthetic peptide and then with 221918(Anti-DOCK9 Antibody) at dilution 1/20.