

DOCK2 RABBIT MAB

货号: N262144

产品全名: DOCK2 兔单克隆抗体

基因符号 DOCK 2; IMD40

UNIPROT ID: Q92608

背景: Involved in cytoskeletal rearrangements required for lymphocyte migration in response of chemokines. Activates RAC1 and RAC2, but not CDC42, by functioning as a guanine nucleotide exchange factor (GEF), which exchanges bound GDP for free GTP.

抗原: A synthetic peptide of human DOCK2

经过测试的应用: WB,IHC-P

推荐稀释比: WB: 1/500-1/1000 IHC: 1/50-1/100

种属反应性: Rabbit

克隆性: Rabbit Monoclonal

克隆编号: R04-5H2

分子量: Calculated MW: 212 kDa; Observed MW: 212 kDa

亚型: IgG

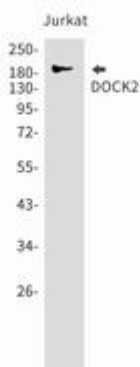
纯化: Affinity Purified

种属反应性: Human

成分: PBS (without Mg²⁺ and Ca²⁺), pH 7.3 containing 50% glycerol, 0.5% BSA and 0.02% sodium azide

研究领域: Signal Transduction

储存和运输: Store at -20°C. Avoid repeated freezing and thawing



Western blot analysis of DOCK2 in Jurkat lysates using DOCK2 antibody.