

## DOCK11 RABBIT PAB

货号: S221919

产品全名: DOCK11 兔多抗

基因符号 ACG; ZIZ2; bB128O4.1

**UNIPROT ID:** Q5JSL3 (Gene Accession - NP\_653259)

**背景:** Small GTPases of the Rho family, Rho, Rac, and Cdc42, are critical regulators of the actin cytoskeleton and many other cellular processes. Rho GTPases are activated by Dbl-homology (DH)-domain-containing guanine nucleotide exchange factors (GEFs). DOCK 11 (dedicator of cytokinesis 11), also known as ACG or ZIZ2 (zizimin2), is a 2073 amino acid protein belonging to the DOCK family of cytokinesis-regulating proteins that is mainly expressed in peripheral blood leukocytes. DOCK 11 functions as a GEF that binds and activates Cdc42 by exchanging bound GDP for free GTP. Cdc42 mediates cell polarity, gene expression, cell cycle progression and cell-cell contacts. Similar to other DOCK family members, DOCK 11 contains a PH domain and two internal DOCK homology regions designated DH1 and DH2.

**抗原:** Synthetic peptide of human DOCK11

**经过测试的应用:** ELISA, IHC

**推荐稀释比:** IHC: 20-100; ELISA: 5000-10000

**种属反应性:** Rabbit

**克隆性:** Rabbit Polyclonal

**亚型:** Immunogen-specific rabbit IgG

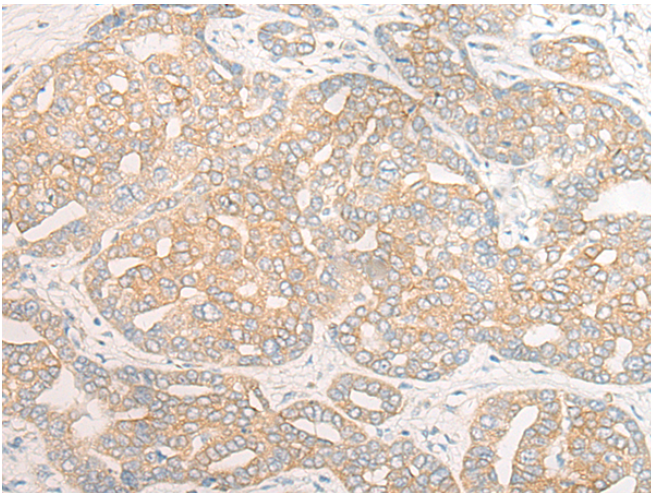
**纯化:** Antigen affinity purification

**种属反应性:** Human, Mouse

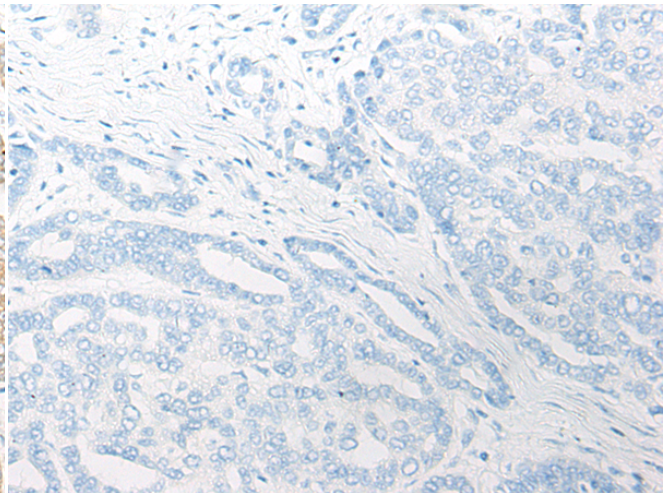
**成分:** PBS (without Mg<sup>2+</sup> and Ca<sup>2+</sup>), pH 7.4, 150 mM NaCl, 0.05% Sodium Azide and 40% glycerol

**研究领域:** Epigenetics and Nuclear Signaling, Cancer

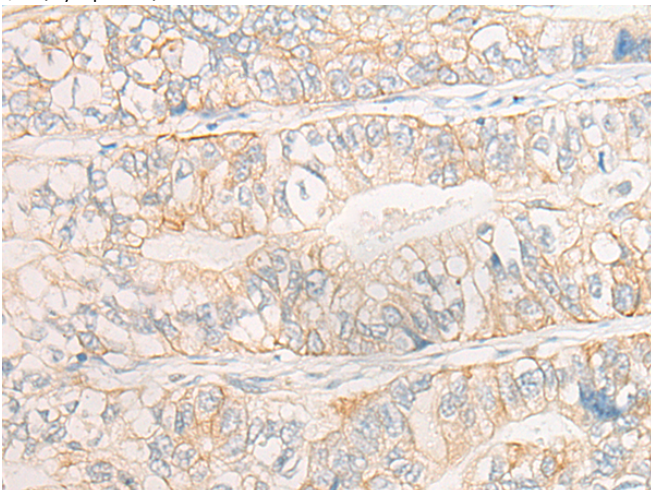
**储存和运输:** Store at -20°C. Avoid repeated freezing and thawing



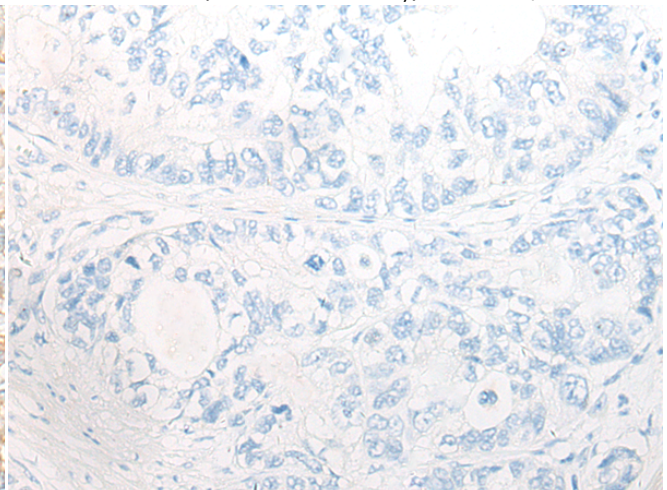
Immunohistochemistry analysis of paraffin embedded Human liver cancer tissue using 221919(DOCK11 Antibody) at a dilution of 1/20(Cytoplasm).



In comparison with the IHC on the left, the same paraffin-embedded Human liver cancer tissue is first treated with the synthetic peptide and then with 221919(Anti-DOCK11 Antibody) at dilution 1/20.



The image on the left is immunohistochemistry of paraffin-embedded Human gastric cancer tissue using 221919(Anti-DOCK11 Antibody) at a dilution of 1/20.



In comparison with the IHC on the left, the same paraffin-embedded Human gastric cancer tissue is first treated with synthetic peptide and then with D266734(Anti-DOCK11 Antibody) at dilution 1/20.



# Product Description

Pioneering GTPase and Oncogene Product Development since 2010

---