

## DNA POLYMERASE MU RABBIT PAB

货号: N225167

产品全名: DNA Polymerase mu 兔多抗

基因符号 POLM; polmu; DNA-directed DNA/RNA polymerase mu; Pol Mu; Terminal transferase

**UNIPROT ID:** Q9NP87

背景: Gap-filling polymerase involved in repair of DNA double-strand breaks by non-homologous end joining (NHEJ).

抗原: Synthesized peptide derived from DNA Pol  $\mu$  . at AA range: 210-290

经过测试的应用: WB,ELISA

推荐稀释比: WB: 1/500-1/1000 ELISA: 1/10000

种属反应性: Rabbit

克隆性: Rabbit Polyclonal

分子量: Calculated MW: 55 kDa; Observed MW: 55 kDa

亚型: IgG

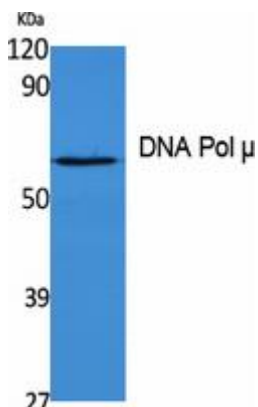
纯化: Affinity Purified

种属反应性: Human

成分: PBS (without Mg<sup>2+</sup> and Ca<sup>2+</sup>), pH 7.3 containing 50% glycerol, 0.5% BSA and 0.02% sodium azide

研究领域: Epigenetics and Nuclear Signaling

储存和运输: Store at -20°C. Avoid repeated freezing and thawing



Western blot analysis of DNA Polymerase mu in K562 lysates using DNA Pol  $\mu$  antibody.