

DMC1 RABBIT PAB

货号: S218542

产品全名: DMC1 兔多抗

基因符号: DMC1H; LIM15; dJ199H16.1

UNIPROT ID: Q14565 (Gene Accession - BC035658)

背景: This gene encodes a member of the superfamily of recombinases (also called DNA strand-exchange proteins). Recombinases are important for repairing double-strand DNA breaks during mitosis and meiosis. This protein, which is evolutionarily conserved, is reported to be essential for meiotic homologous recombination and may thus play an important role in generating diversity of genetic information. Alternative splicing results in multiple transcript variants.

抗原: Full length fusion 蛋白

经过测试的应用: ELISA, IHC

推荐稀释比: IHC: 30-150; ELISA: 5000-10000

种属反应性: Rabbit

克隆性: Rabbit Polyclonal

亚型: Immunogen-specific rabbit IgG

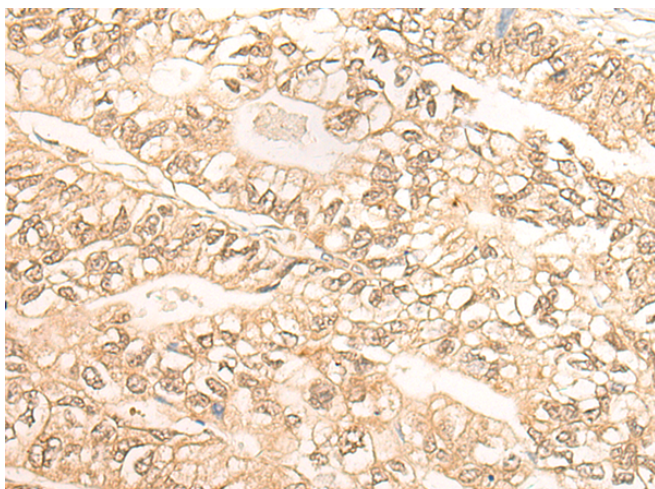
纯化: Antigen affinity purification

种属反应性: Human, Mouse

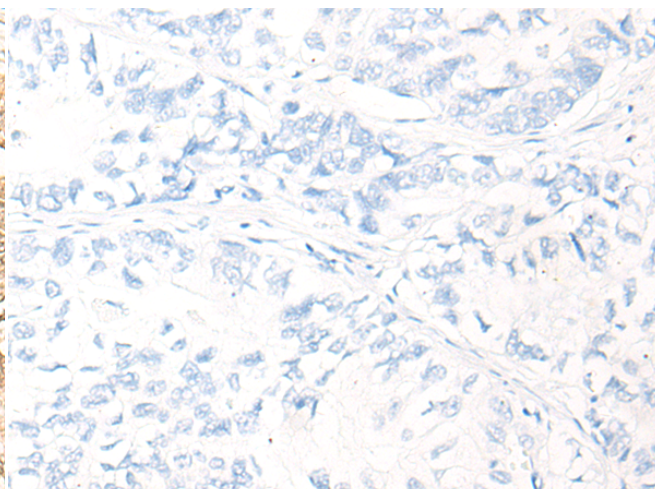
成分: PBS (without Mg²⁺ and Ca²⁺), pH 7.4, 150 mM NaCl, 0.05% Sodium Azide and 40% glycerol

研究领域: Epigenetics and Nuclear Signaling

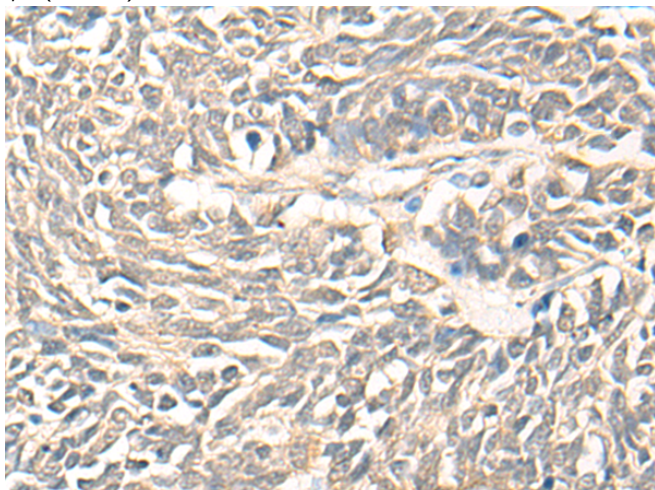
储存和运输: Store at -20°C. Avoid repeated freezing and thawing



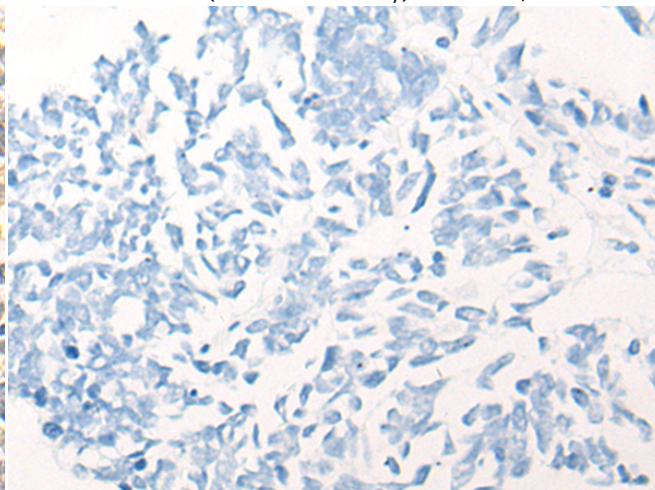
Immunohistochemistry analysis of paraffin embedded Human gastric cancer tissue using 218542(DMC1 Antibody) at a dilution of 1/30(Nucleus).



In comparison with the IHC on the left, the same paraffin-embedded Human gastric cancer tissue is first treated with the fusion protein and then with 218542(Anti-DMC1 Antibody) at dilution 1/30.



The image on the left is immunohistochemistry of paraffin-embedded Human lung cancer tissue using 218542(Anti-DMC1 Antibody) at a dilution of 1/30.



In comparison with the IHC on the left, the same paraffin-embedded Human lung cancer tissue is first treated with fusion protein and then with D224646(Anti-DMC1 Antibody) at dilution 1/30.



Product Description

Pioneering GTPase and Oncogene Product Development since 2010
