

## DIXDC1 RABBIT PAB

货号: S221904

产品全名: DIXDC1 兔多抗

基因符号: CCD1

**UNIPROT ID:** Q155Q3 (Gene Accession - NP\_001033043)

**背景:** The protein encoded by this gene is a positive regulator of the Wnt signaling pathway. The encoded protein is found associated with gamma tubulin at the centrosome. Alternative splicing results in multiple transcript variants encoding different isoforms.

**抗原:** Synthetic peptide of human DIXDC1

**经过测试的应用:** ELISA, IHC

**推荐稀释比:** IHC: Oct-50; ELISA: 5000-10000

**种属反应性:** Rabbit

**克隆性:** Rabbit Polyclonal

**亚型:** Immunogen-specific rabbit IgG

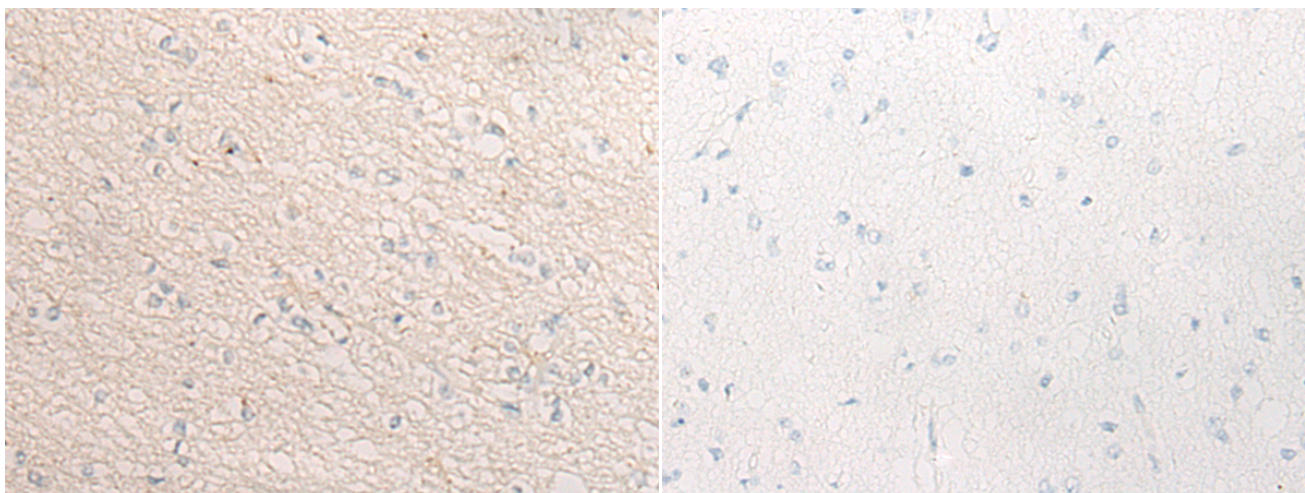
**纯化:** Antigen affinity purification

**种属反应性:** Human, Rat

**成分:** PBS (without Mg<sup>2+</sup> and Ca<sup>2+</sup>), pH 7.4, 150 mM NaCl, 0.05% Sodium Azide and 40% glycerol

**研究领域:** Signal Transduction

**储存和运输:** Store at -20°C. Avoid repeated freezing and thawing



Immunohistochemistry analysis of paraffin embedded Human brain tissue using 221904(DIXDC1 Antibody) at a dilution of 1/20(Cytoplasm).

In comparison with the IHC on the left, the same paraffin-embedded Human brain tissue is first treated with the synthetic peptide and then with 221904(Anti-DIXDC1 Antibody) at dilution 1/20.