

## DISC1 RABBIT MAB

货号: N262134

产品全名: DISC1 兔单克隆抗体

基因符号 C1orf136; DISC1; KIAA0457; RP4-730B13.1; SCZD9

**UNIPROT ID:** Q9NRI5

背景: Involved in the regulation of multiple aspects of embryonic and adult neurogenesis. Required for neural progenitor proliferation in the ventricular/subventricular zone during embryonic brain development and in the adult dentate gyrus of the hippocampus.

抗原: Recombinant protein of human DISC1

经过测试的应用: WB,IHC-F,IHC-P,ICC/IF,IP

推荐稀释比: WB: 1/500-1/1000 IHC: 1/50-1/100 IF: 1/50-1/200 IP: 1/20

种属反应性: Rabbit

克隆性: Rabbit Monoclonal

克隆编号: R03-7F5

分子量: Calculated MW: 94 kDa; Observed MW: 94 kDa

亚型: IgG

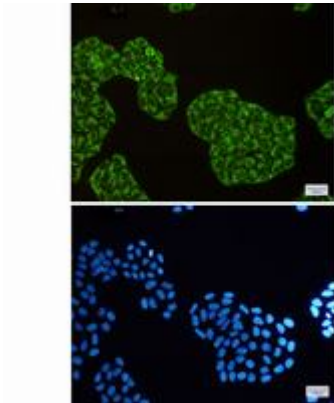
纯化: Affinity Purified

种属反应性: Human, Mouse and Rat

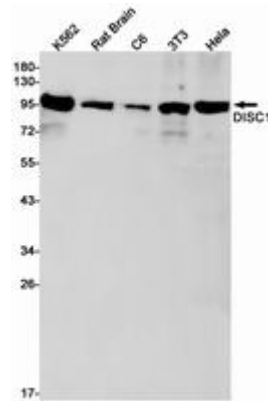
成分: PBS (without Mg<sup>2+</sup> and Ca<sup>2+</sup>), pH 7.3 containing 50% glycerol, 0.5% BSA and 0.02% sodium azide

研究领域: Neuroscience

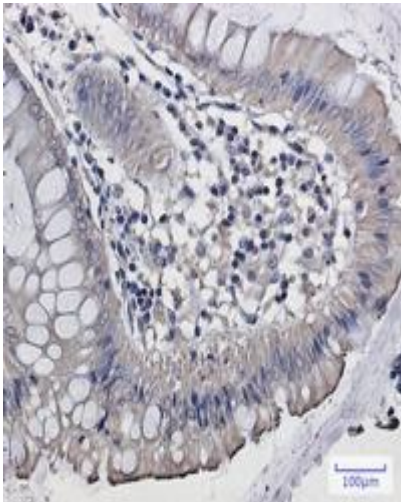
储存和运输: Store at -20°C. Avoid repeated freezing and thawing



Immunocytochemistry analysis of DISC1 (green) in HeLa using DISC1 antibody, and DAPI (blue)



Western blot analysis of DISC1 in K562, rat Brain, C6, 3T3, HeLa lysates using DISC1 antibody.



Immunohistochemistry analysis of paraffin-embedded Human colon cancer using DISC1 antibody. High-pressure and temperature Sodium Citrate pH 6.0 was used for antigen retrieval.