

## DIRAS1 RABBIT PAB

货号: S220509

产品全名: DIRAS1 兔多抗

基因符号: RIG; GBTS1; Di-Ras1

**UNIPROT ID:** O95057 (Gene Accession - NP\_660156)

**背景:** DIRAS1 (DIRAS family, GTP-binding Ras-like 1), also known as distinct subgroup of the Ras family member 1, RIG (Ras-related inhibitor of cell growth), small GTP-binding tumor suppressor 1 or GBTS1, is a 198 amino acid cell membrane protein expressed at high levels in brain and heart. DIRAS1 displays low GTPase activity and is encoded by a gene that maps to human chromosome 19p13.3.

**抗原:** Synthetic peptide of human DIRAS1

**经过测试的应用:** ELISA, IHC

**推荐稀释比:** IHC: 50-200; ELISA: 1000-5000

**种属反应性:** Rabbit

**克隆性:** Rabbit Polyclonal

**亚型:** Immunogen-specific rabbit IgG

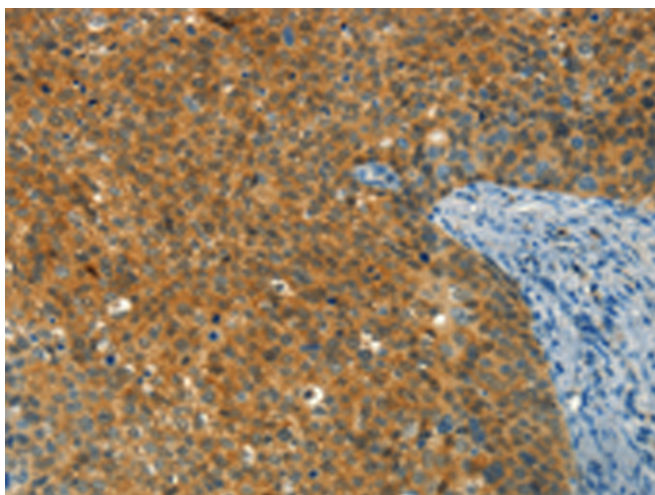
**纯化:** Antigen affinity purification

**种属反应性:** Human

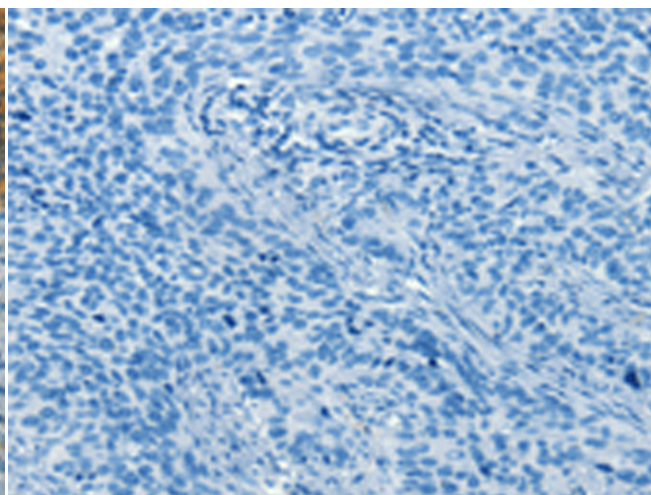
**成分:** PBS (without Mg<sup>2+</sup> and Ca<sup>2+</sup>), pH 7.4, 150 mM NaCl, 0.05% Sodium Azide and 40% glycerol

**研究领域:** Signal Transduction

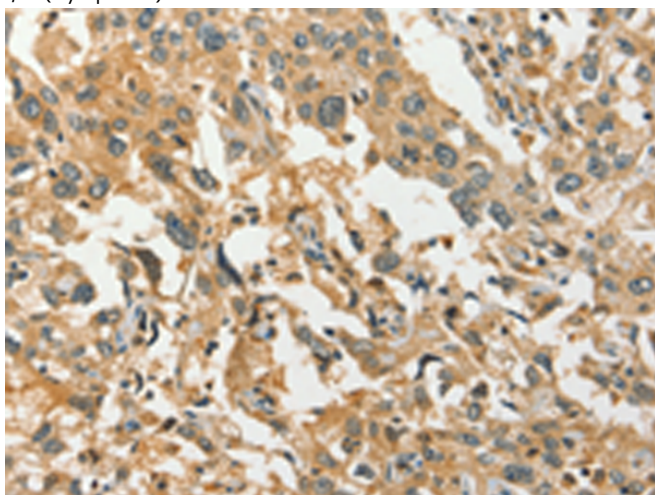
**储存和运输:** Store at -20°C. Avoid repeated freezing and thawing



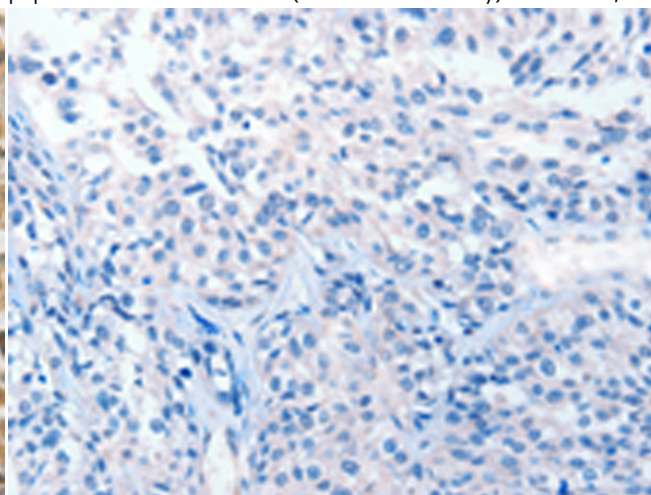
Immunohistochemistry analysis of paraffin embedded Human cervical cancer tissue using 220509(DIRAS1 Antibody) at a dilution of 1/30(Cytoplasm).



In comparison with the IHC on the left, the same paraffin-embedded Human cervical cancer tissue is first treated with the synthetic peptide and then with 220509(Anti-DIRAS1 Antibody) at dilution 1/30.



The image on the left is immunohistochemistry of paraffin-embedded Human esophagus cancer tissue using 220509(Anti-DIRAS1 Antibody) at a dilution of 1/30.



In comparison with the IHC on the left, the same paraffin-embedded Human esophagus cancer tissue is first treated with synthetic peptide and then with D261626(Anti-DIRAS1 Antibody) at dilution 1/30.



# Product Description

Pioneering GTPase and Oncogene Product Development since 2010

---