

## DIPK2B RABBIT PAB

货号: S220486

产品全名: DIPK2B 兔多抗

基因符号: DIAIR; CXorf36; PRO3743; EPQL1862; bA435K1.1; 4930578C19Rik

**UNIPROT ID:** Q9H7Y0 (Gene Accession - NP\_078965 )

背景: The function of this protein remains unknown.

抗原: Synthetic peptide of human DIPK2B

经过测试的应用: ELISA, IHC

推荐稀释比: IHC: 25-100; ELISA: 5000-10000

种属反应性: Rabbit

克隆性: Rabbit Polyclonal

亚型: Immunogen-specific rabbit IgG

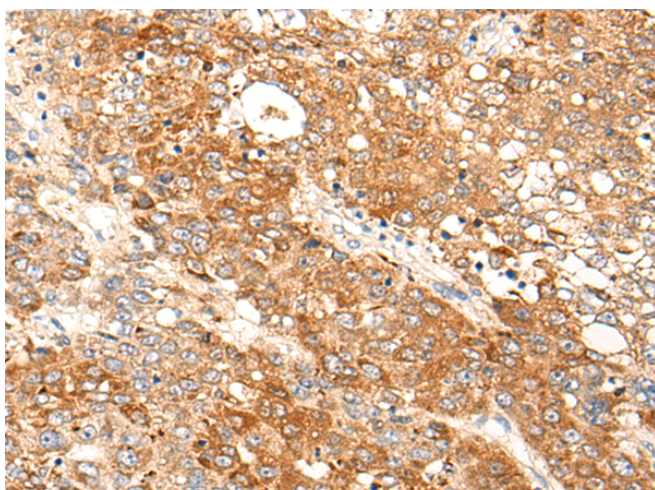
纯化: Antigen affinity purification

种属反应性: Human, Mouse

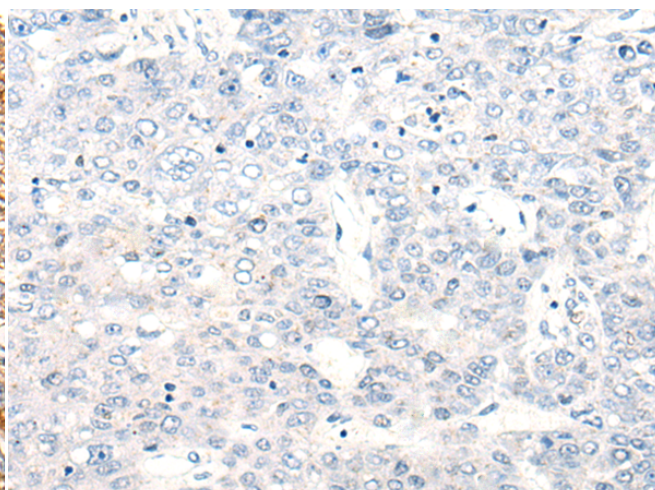
成分: PBS (without Mg<sup>2+</sup> and Ca<sup>2+</sup>), pH 7.4, 150 mM NaCl, 0.05% Sodium Azide and 40% glycerol

研究领域: Cell Biology

储存和运输: Store at -20°C. Avoid repeated freezing and thawing



Immunohistochemistry analysis of paraffin embedded Human liver cancer tissue using 220486(DIPK2B Antibody) at a dilution of 1/25(Cytoplasm).



In comparison with the IHC on the left, the same paraffin-embedded Human liver cancer tissue is first treated with the synthetic peptide and then with 220486(Anti-DIPK2B Antibody) at dilution 1/25.