

DIP2B RABBIT PAB

货号: S221902

产品全名: DIP2B 兔多抗

基因符号

UNIPROT ID: Q9P265 (Gene Accession - NP_775873)

背景: This gene encodes a member of the disco-interacting protein homolog 2 protein family. The encoded protein contains a binding site for the transcriptional regulator DNA methyltransferase 1 associated protein 1 as well as AMP-binding sites. The presence of these sites suggests that the encoded protein may participate in DNA methylation. This gene is located near a folate-sensitive fragile site, and CGG-repeat expansion in the promoter of this gene which affects transcription has been detected in individuals containing this fragile site on chromosome 12.

抗原: Synthetic peptide of human DIP2B

经过测试的应用: ELISA, IHC

推荐稀释比: IHC: 25-100; ELISA: 5000-10000

种属反应性: Rabbit

克隆性: Rabbit Polyclonal

亚型: Immunogen-specific rabbit IgG

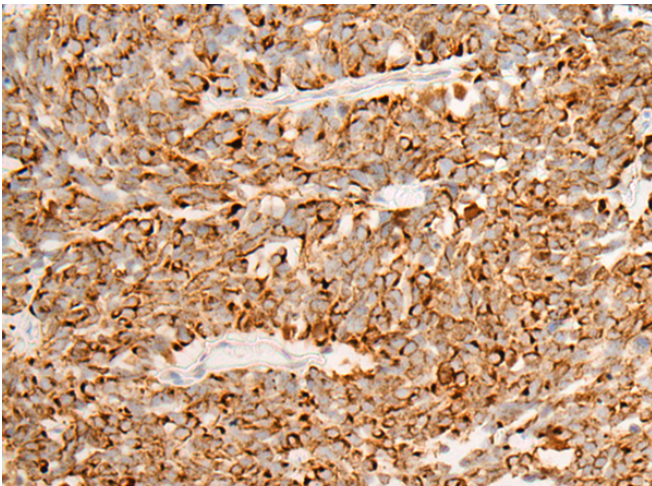
纯化: Antigen affinity purification

种属反应性: Human, Mouse

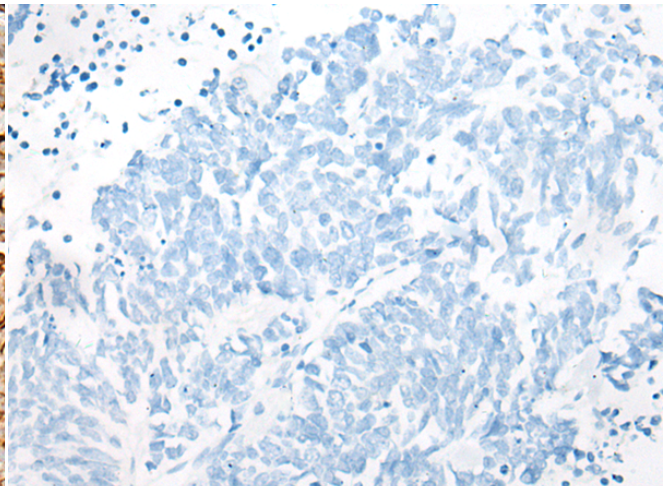
成分: PBS (without Mg²⁺ and Ca²⁺), pH 7.4, 150 mM NaCl, 0.05% Sodium Azide and 40% glycerol

研究领域: Cell Biology

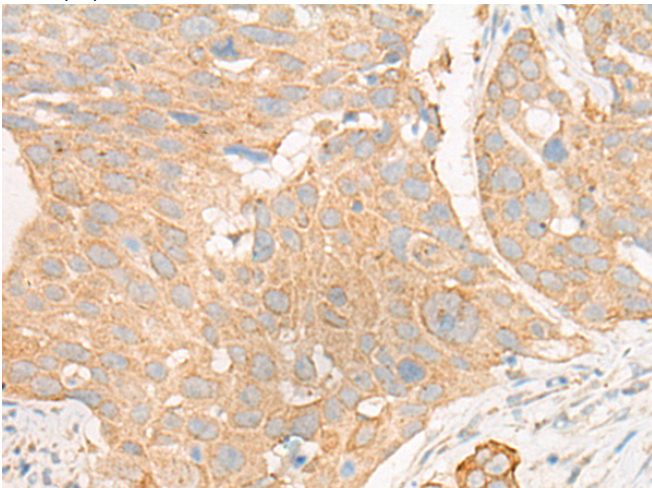
储存和运输: Store at -20°C. Avoid repeated freezing and thawing



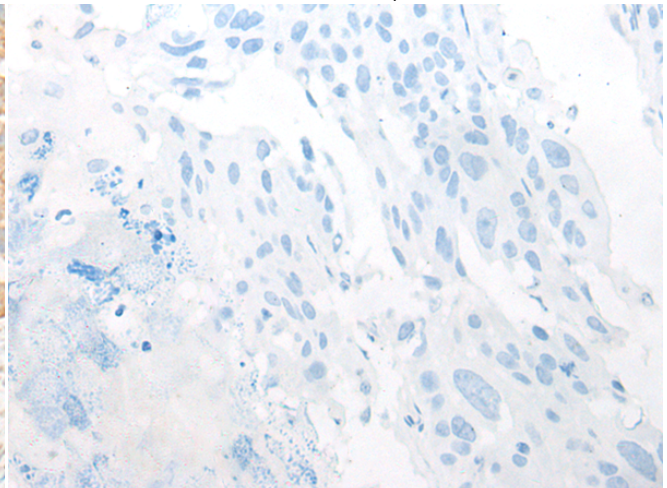
Immunohistochemistry analysis of paraffin embedded Human lung cancer tissue using 221902(DIP2B Antibody) at a dilution of 1/20(Cytoplasm).



In comparison with the IHC on the left, the same paraffin-embedded Human lung cancer tissue is first treated with the synthetic peptide and then with 221902(Anti-DIP2B Antibody) at dilution 1/20.



The image on the left is immunohistochemistry of paraffin-embedded Human esophagus cancer tissue using 221902(Anti-DIP2B Antibody) at a dilution of 1/20.



In comparison with the IHC on the left, the same paraffin-embedded Human esophagus cancer tissue is first treated with synthetic peptide and then with D263713(Anti-DIP2B Antibody) at dilution 1/20.



Product Description

Pioneering GTPase and Oncogene Product Development since 2010
