

DIP2A RABBIT PAB

货号: S219451

产品全名: DIP2A 兔多抗

基因符号: DIP2; C21orf106

UNIPROT ID: Q14689 (Gene Accession - BC033718)

背景: The protein encoded by this gene may be involved in axon patterning in the central nervous system. This gene is not highly expressed. Several transcript variants encoding different isoforms have been found for this gene. [provided by RefSeq, Mar 2009]

抗原: Fusion protein of human DIP2A

经过测试的应用: ELISA, IHC

推荐稀释比: IHC: 150-300; ELISA: 5000-10000

种属反应性: Rabbit

克隆性: Rabbit Polyclonal

亚型: Immunogen-specific rabbit IgG

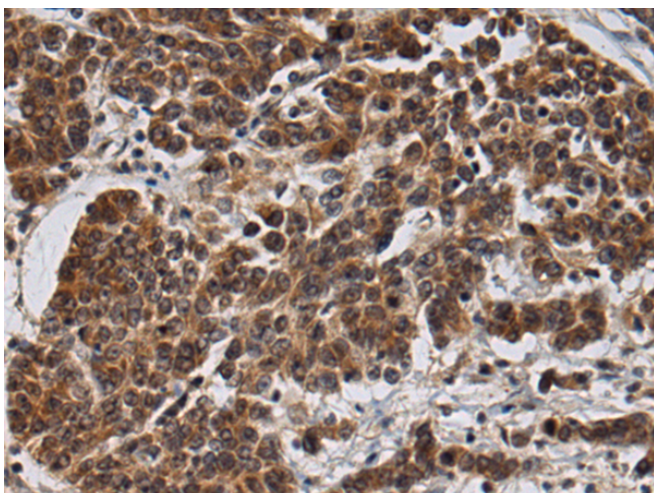
纯化: Antigen affinity purification

种属反应性: Human, Mouse

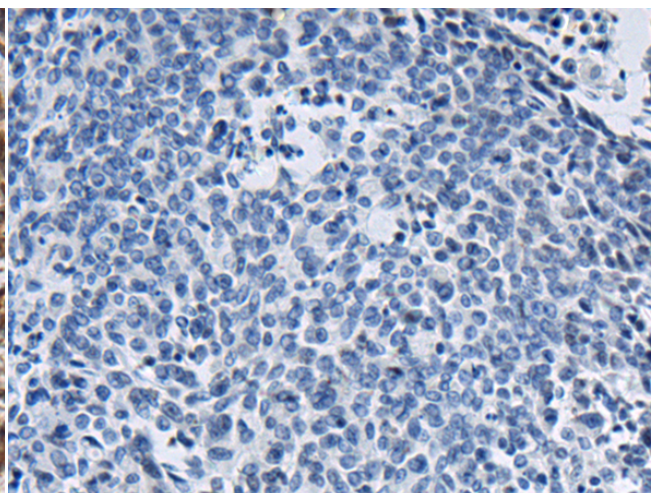
成分: PBS (without Mg²⁺ and Ca²⁺), pH 7.4, 150 mM NaCl, 0.05% Sodium Azide and 40% glycerol

研究领域: Cancer

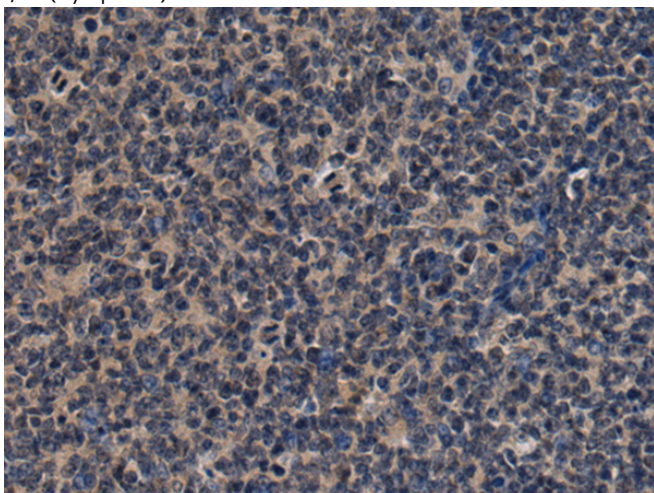
储存和运输: Store at -20°C. Avoid repeated freezing and thawing



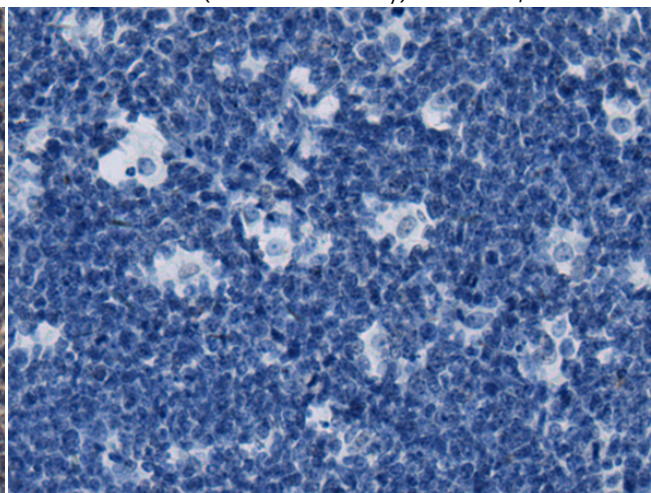
Immunohistochemistry analysis of paraffin embedded Human colorectal cancer tissue using 219451(DIP2A Antibody) at a dilution of 1/120(Cytoplasm).



In comparison with the IHC on the left, the same paraffin-embedded Human colorectal cancer tissue is first treated with the fusion protein and then with 219451(Anti-DIP2A Antibody) at dilution 1/120.



The image on the left is immunohistochemistry of paraffin-embedded Human tonsil tissue using 219451(Anti-DIP2A Antibody) at a dilution of 1/120.



In comparison with the IHC on the left, the same paraffin-embedded Human tonsil tissue is first treated with fusion protein and then with D227121(Anti-DIP2A Antibody) at dilution 1/120.



Product Description

Pioneering GTPase and Oncogene Product Development since 2010
