

## DHX8 RABBIT MAB

货号: N262133

产品全名: DHX8 兔单克隆抗体

基因符号 DDX8; Dhr2; HRH1; PRP22; PRPF22

**UNIPROT ID:** Q14562

背景: Facilitates nuclear export of spliced mRNA by releasing the RNA from the spliceosome.

抗原: A synthetic peptide of human DHX8

经过测试的应用: WB, ICC/IF

推荐稀释比: WB: 1/500-1/1000 IF: 1/50-1/200

种属反应性: Rabbit

克隆性: Rabbit Monoclonal

克隆编号: R04-117

分子量: Calculated MW: 139 kDa; Observed MW: 139 kDa

亚型: IgG

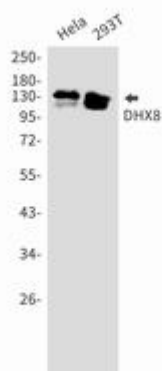
纯化: Affinity Purified

种属反应性: Human

成分: PBS (without Mg<sup>2+</sup> and Ca<sup>2+</sup>), pH 7.3 containing 50% glycerol, 0.5% BSA and 0.02% sodium azide

研究领域: Epigenetics and Nuclear Signaling

储存和运输: Store at -20°C. Avoid repeated freezing and thawing



Western blot analysis of DHX8 in HeLa, 293T lysates using DHX8 antibody.