

## DHX38 RABBIT PAB

**Cat.#:** S219412

**Product Name:** Anti-DHX38 Rabbit Polyclonal Antibody

**Synonyms:** RP84; DDX38; PRP16; PRPF16

**UNIPROT ID:** Q92620 (Gene Accession - BC004235 )

**Background:** DEAD box proteins, characterized by the conserved motif Asp-Glu-Ala-Asp (DEAD), are putative RNA helicases. They are implicated in a number of cellular processes involving alteration of RNA secondary structure such as translation initiation, nuclear and mitochondrial splicing, and ribosome and spliceosome assembly. Based on their distribution patterns, some members of this family are believed to be involved in embryogenesis, spermatogenesis, and cellular growth and division. The protein encoded by this gene is a member of the DEAD/H box family of splicing factors. This protein resembles yeast Prp16 more closely than other DEAD/H family members. It is an ATPase and essential for the catalytic step II in pre-mRNA splicing process. [provided by RefSeq, Jul 2008]

**Immunogen:** Fusion protein of human DHX38

**Applications:** ELISA, IHC

**Recommended Dilutions:** IHC: 100-300; ELISA: 5000-10000

**Host Species:** Rabbit

**Clonality:** Rabbit Polyclonal

**Isotype:** Immunogen-specific rabbit IgG

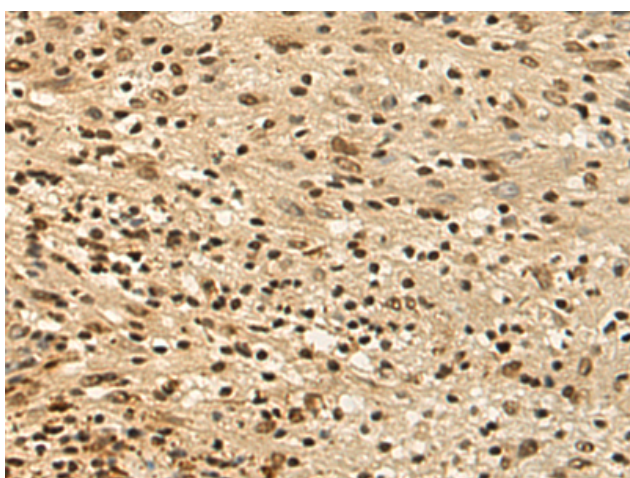
**Purification:** Antigen affinity purification

**Species Reactivity:** Human

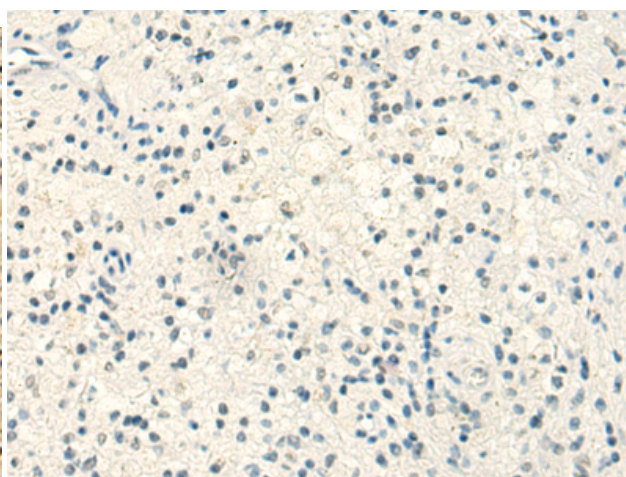
**Constituents:** PBS (without Mg<sup>2+</sup> and Ca<sup>2+</sup>), pH 7.4, 150 mM NaCl, 0.05% Sodium Azide and 40% glycerol

**Research Areas:** Epigenetics and Nuclear Signaling

**Storage & Shipping:** Store at -20°C. Avoid repeated freezing and thawing



Immunohistochemistry analysis of paraffin embedded Human brain tissue using 219412(DHX38 Antibody) at a dilution of 1/105(Nucleus).



In comparison with the IHC on the left, the same paraffin-embedded Human brain tissue is first treated with the fusion protein and then with 219412(Anti-DHX38 Antibody) at dilution 1/105.



# Product Description

Pioneering GTPase and Oncogene Product Development since 2010

---