

## DGLUCY RABBIT PAB

货号: S218813

产品全名: DGLUCY 兔多抗

基因符号: C14orf159

**UNIPROT ID:** Q7Z3D6 (Gene Accession - BC009182)

背景: D-glutamate cyclase that converts D-glutamate to 5-oxo-D-proline.

抗原: Fusion protein of human DGLUCY

经过测试的应用: ELISA, WB, IHC

推荐稀释比: IHC: 25-100;WB: 500-2000;ELISA: 5000-10000

种属反应性: Rabbit

克隆性: Rabbit Polyclonal

亚型: Immunogen-specific rabbit IgG

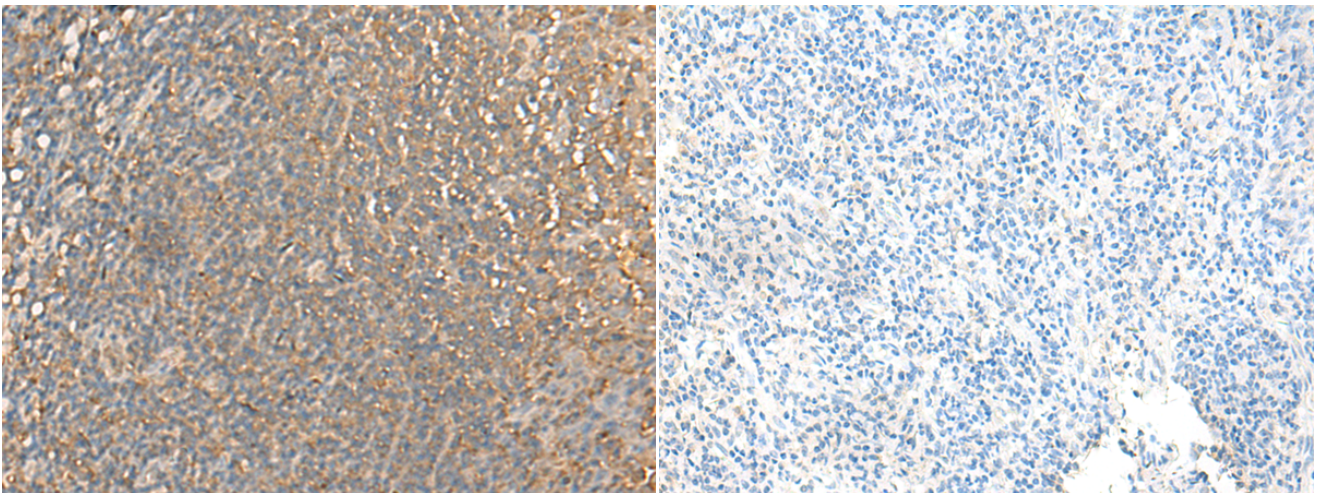
纯化: Antigen affinity purification

种属反应性: Human

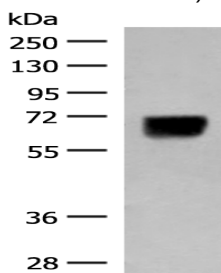
成分: PBS (without Mg<sup>2+</sup> and Ca<sup>2+</sup>), pH 7.4, 150 mM NaCl, 0.05% Sodium Azide and 40% glycerol

研究领域: Cell Biology

储存和运输: Store at -20°C. Avoid repeated freezing and thawing



Immunohistochemistry analysis of paraffin embedded Human tonsil tissue using 218813(DGLUCY Antibody) at a dilution of 1/40(Cytoplasm and Cell membrane). In comparison with the IHC on the left, the same paraffin-embedded Human tonsil tissue is first treated with the fusion protein and then with 218813(Anti-DGLUCY Antibody) at dilution 1/40.



Gel: 8%SDS-PAGE, Lysate: 40 µg;

Lane: Human thyroid tissue lysate;

Primary antibody: 218813(DGLUCY Antibody) at dilution 1/250;

Secondary antibody: Goat anti rabbit IgG at 1/8000 dilution;

Exposure time: 20 seconds