

DGCR8 RABBIT PAB

货号: N225648

产品全名: DGCR8 兔多抗

基因符号 DGCR8; DGCRK6; Gyl; C22orf12; D16Wis2; pasha

UNIPROT ID: Q8WYQ5

背景: Component of the microprocessor complex that is required to process primary miRNA transcripts (pri-miRNAs) to release precursor miRNA (pre-miRNA) in the nucleus. Within the microprocessor complex, DGCR8 function as a molecular anchor necessary for the recognition of pri-miRNA at dsRNA-ssRNA junction and directs DROSHA to cleave 11 bp away from the junction to release hairpin-shaped pre-miRNAs that are subsequently cut by the cytoplasmic DICER to generate mature miRNAs.

抗原: A synthesized peptide derived from human DGCR8

经过测试的应用: WB, ICC/IF, IP

推荐稀释比: WB: 1/500-1/1000 IF: 1/50-1/200 IP: 1/20

种属反应性: Rabbit

克隆性: Rabbit Polyclonal

分子量: Calculated MW: 86 kDa; Observed MW: 100 kDa

亚型: IgG

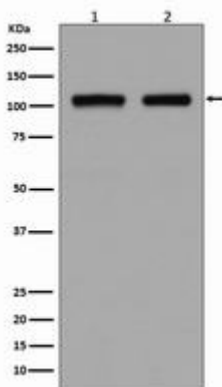
纯化: Affinity Chromatography

种属反应性: Human, Mouse and Rat

成分: PBS (without Mg²⁺ and Ca²⁺), pH 7.3 containing 50% glycerol, 0.5% BSA and 0.02% sodium azide

研究领域: Epigenetics and Nuclear Signaling

储存和运输: Store at -20°C. Avoid repeated freezing and thawing



Western blot analysis of DGCR8 in (1) HEK293 lysates; (2) HeLa lysates using DGCR8 antibody.



Product Description

Pioneering GTPase and Oncogene Product Development since 2010
