

DEPTOR RABBIT PAB

货号: S219384

产品全名: DEPTOR 兔多抗

基因符号: DEP.6; DEPDC6

UNIPROT ID: Q8TB45 (Gene Accession - BC024746)

背景: Negative regulator of the mTORC1 and mTORC2 signaling pathways. Inhibits the kinase activity of both complexes.

抗原: Fusion protein of human DEPTOR

经过测试的应用: ELISA, WB, IHC

推荐稀释比: IHC: 150-300;WB: 1000-5000;ELISA: 5000-10000

种属反应性: Rabbit

克隆性: Rabbit Polyclonal

亚型: Immunogen-specific rabbit IgG

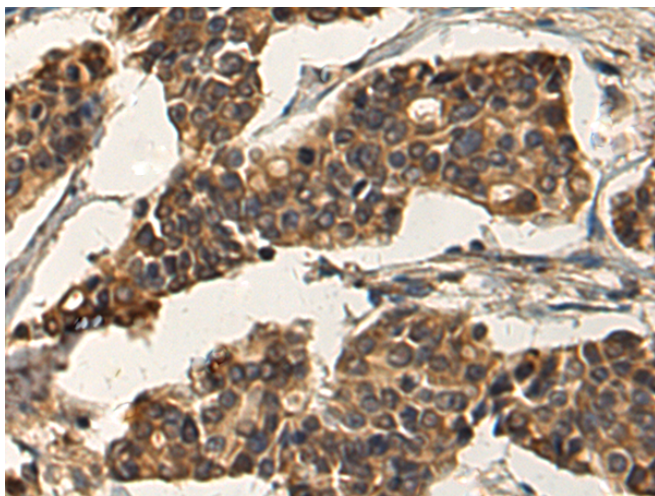
纯化: Antigen affinity purification

种属反应性: Human, Mouse

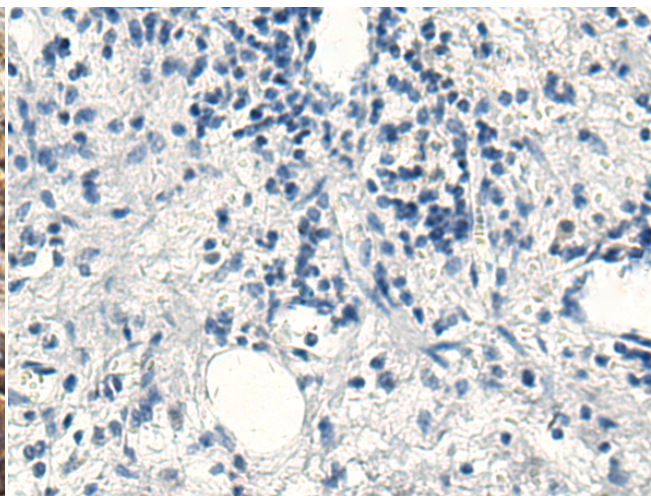
成分: PBS (without Mg²⁺ and Ca²⁺), pH 7.4, 150 mM NaCl, 0.05% Sodium Azide and 40% glycerol

研究领域: Cell Biology

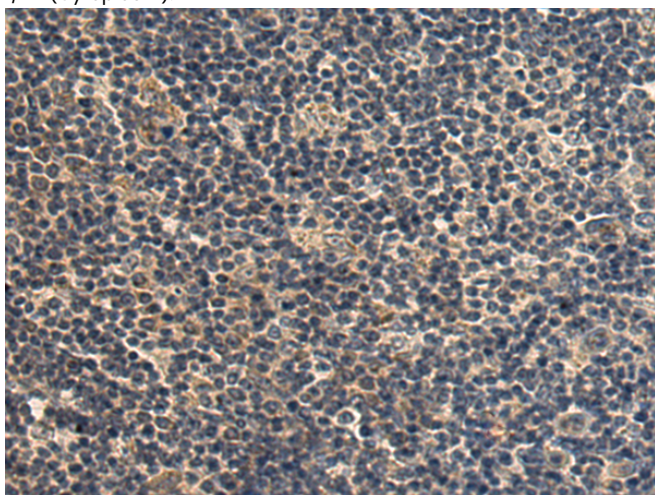
储存和运输: Store at -20°C. Avoid repeated freezing and thawing



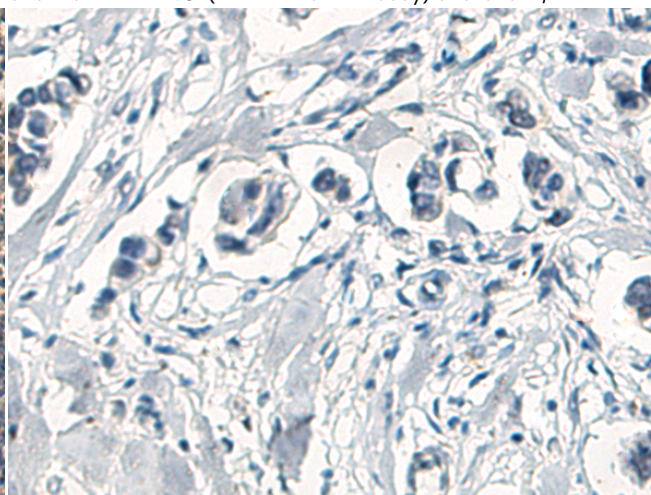
Immunohistochemistry analysis of paraffin embedded Human breast cancer tissue using 219384(DEPTOR Antibody) at a dilution of 1/120(Cytoplasm).



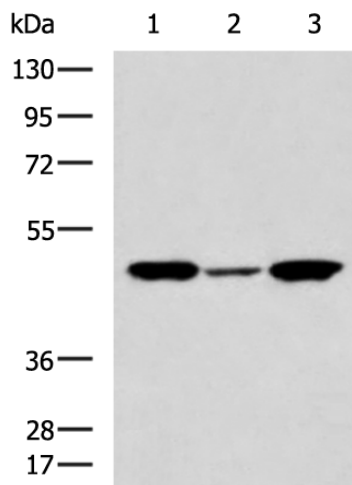
In comparison with the IHC on the left, the same paraffin-embedded Human breast cancer tissue is first treated with the fusion protein and then with 219384(Anti-DEPTOR Antibody) at dilution 1/120.



The image on the left is immunohistochemistry of paraffin-embedded Human esophagus cancer tissue using 219384(Anti-DEPTOR Antibody) at a dilution of 1/120.



In comparison with the IHC on the left, the same paraffin-embedded Human esophagus cancer tissue is first treated with fusion protein and then with D226602(Anti-DEPTOR Antibody) at dilution 1/120.



Gel: 8%SDS-PAGE, Lysate: 40 µg;
 Lane 1-3: LOVO, 231 and 293T cell lysates;
 Primary antibody: 219384(DEPTOR Antibody) at dilution 1/1000;
 Secondary antibody: HRP-conjugated Goat anti rabbit IgG at 1/5000 dilution;
 Exposure time: 1 minute



Product Description

Pioneering GTPase and Oncogene Product Development since 2010
