

## DDX5 RABBIT MAB

货号: N262124

产品全名: DDX5 兔单克隆抗体

基因符号 DDX5; G17P1; HELR; HLRI; Probable ATP-dependent RNA helicase DDX5; DEAD box protein 5; RNA helicase p68

**UNIPROT ID:** P17844

背景: RNA-dependent ATPase activity. The rate of ATP hydrolysis is highly stimulated by single-stranded RNA. May be involved in pre-mRNA splicing.

抗原: A synthetic peptide of human DDX5

经过测试的应用: WB,IHC-F,IHC-P,ICC/IF,IP

推荐稀释比: WB: 1/500-1/1000 IHC: 1/50-1/100 IF: 1/50-1/200 IP: 1/20

种属反应性: Rabbit

克隆性: Rabbit Monoclonal

克隆编号: R04-2K2

分子量: Calculated MW: 69 kDa; Observed MW: 69 kDa

亚型: IgG

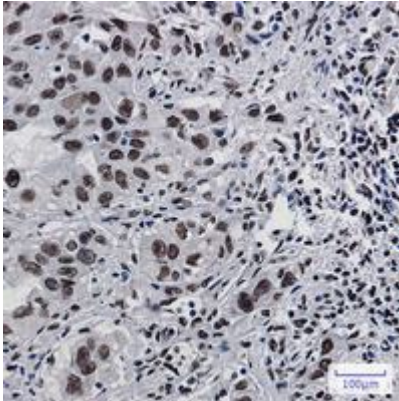
纯化: Affinity Purified

种属反应性: Human, Mouse and Rat

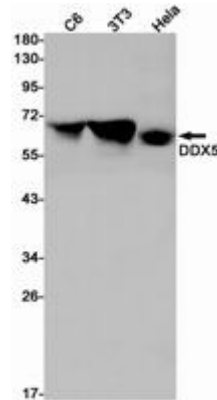
成分: PBS (without Mg<sup>2+</sup> and Ca<sup>2+</sup>), pH 7.3 containing 50% glycerol, 0.5% BSA and 0.02% sodium azide

研究领域: Epigenetics and Nuclear Signaling

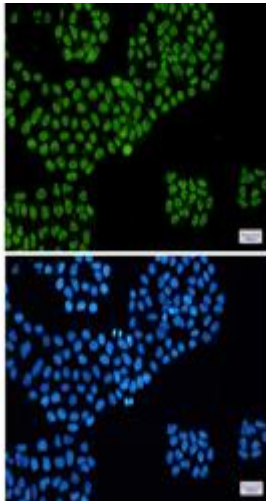
储存和运输: Store at -20°C. Avoid repeated freezing and thawing



Immunohistochemistry analysis of paraffin-embedded Human lung cancer using DDX5 antibody. High-pressure and temperature Sodium Citrate pH 6.0 was used for antigen retrieval.



Western blot analysis of DDX5 in C6, 3T3, Hela lysates using DDX5 antibody.



Immunocytochemistry analysis of DDX5 (green) in Hela using DDX5 antibody, and DAPI (blue)