

## DDX43 RABBIT PAB

货号: S217355

产品全名: DDX43 兔多抗

基因符号: CT13; HAGE

**UNIPROT ID:** Q9NXZ2 (Gene Accession - BC066938)

**背景:** DEAD-box proteins, characterized by the conserved motif Asp-Glu-Ala-Asp, are putative RNA helicases implicated in several cellular processes involving modifications of RNA secondary structure and ribosome/spliceosome assembly. Based on their distribution patterns, some members of this family may be involved in embryogenesis, spermatogenesis and cellular growth and division. DDX43 (DEAD (Asp-Glu-Ala-Asp) box polypeptide 43), also known as CT13 or HAGE, is a 648 amino acid protein that contains one KH domain, one helicase C-terminal domain and one helicase ATP-binding domain and belongs to the DEAD-box family. Expressed in testis and present at abnormally high levels in a variety of tumors, DDX43 is thought to function as an ATP-dependent RNA helicase that may play a role tumor transformation and metastasis.

**抗原:** Fusion protein of human DDX43

**经过测试的应用:** ELISA, WB, IHC

**推荐稀释比:** IHC: 50-200;WB: 200-1000;ELISA: 2000-5000

**种属反应性:** Rabbit

**克隆性:** Rabbit Polyclonal

**亚型:** Immunogen-specific rabbit IgG

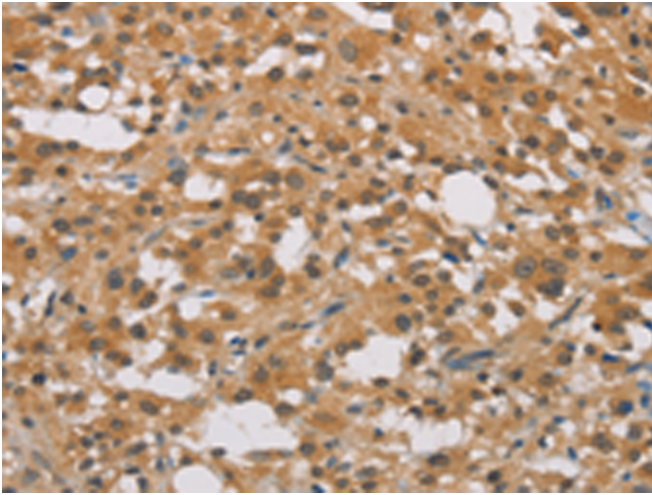
**纯化:** Antigen affinity purification

**种属反应性:** Human

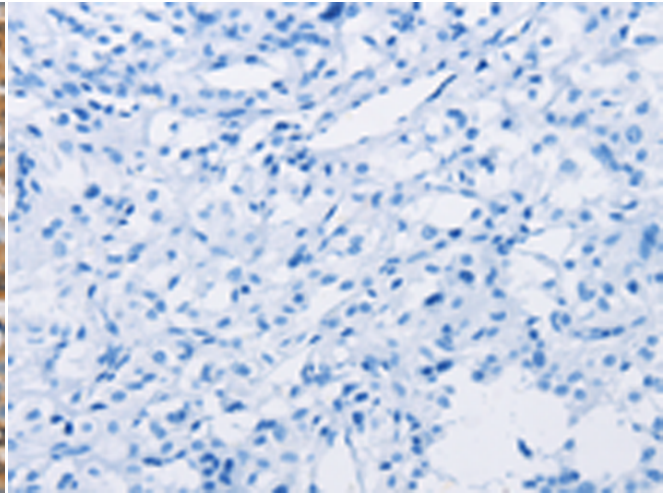
**成分:** PBS (without Mg<sup>2+</sup> and Ca<sup>2+</sup>), pH 7.4, 150 mM NaCl, 0.05% Sodium Azide and 40% glycerol

**研究领域:** Epigenetics and Nuclear Signaling, Cancer

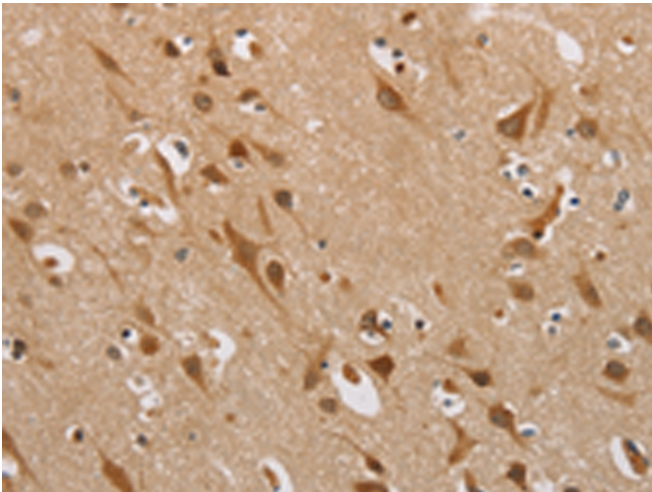
**储存和运输:** Store at -20°C. Avoid repeated freezing and thawing



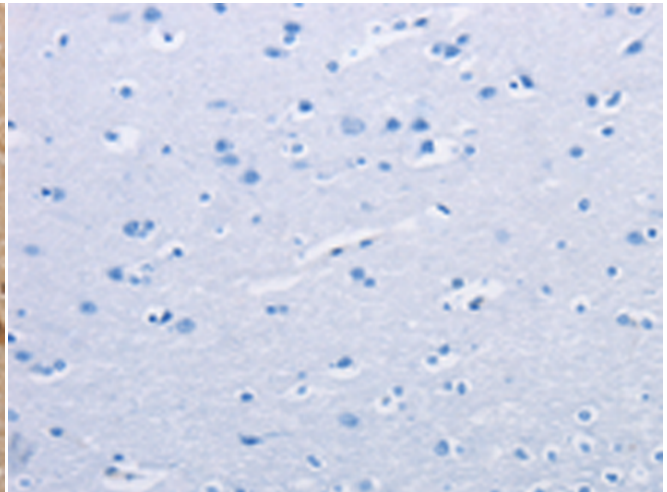
Immunohistochemistry analysis of paraffin embedded Human thyroid cancer tissue using 217355(DDX43 Antibody) at a dilution of 1/40(Cytoplasm or Nucleus).



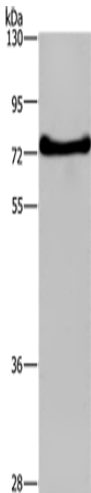
In comparison with the IHC on the left, the same paraffin-embedded Human thyroid cancer tissue is first treated with the fusion protein and then with 217355(Anti-DDX43 Antibody) at dilution 1/40.



The image on the left is immunohistochemistry of paraffin-embedded Human brain tissue using 217355(Anti-DDX43 Antibody) at a dilution of 1/40.



In comparison with the IHC on the left, the same paraffin-embedded Human brain tissue is first treated with fusion protein and then with D22223(Anti-DDX43 Antibody) at dilution 1/40.



Gel: 8%SDS-PAGE, Lysate: 40 µg;  
Lane: HepG2 cells;  
Primary antibody: 217355(DDX43 Antibody) at dilution 1/200;  
Secondary antibody: Goat anti rabbit IgG at 1/8000 dilution;  
Exposure time: 3 minutes



# Product Description

Pioneering GTPase and Oncogene Product Development since 2010

---