

## DDX27 RABBIT PAB

货号: S212306

产品全名: DDX27 兔多抗

基因符号: DRS1; RHLPI; Drslp; PP3241; HSPC259; dJ686N3.1

**UNIPROT ID:** Q96GQ7 (Gene Accession - BC011927)

**背景:** DEAD box proteins, characterized by the conserved motif Asp-Glu-Ala-Asp (DEAD), are putative RNA helicases. They are implicated in a number of cellular processes involving alteration of RNA secondary structure such as translation initiation, nuclear and mitochondrial splicing, and ribosome and spliceosome assembly. Based on their distribution patterns, some members of this family are believed to be involved in embryogenesis, spermatogenesis, and cellular growth and division. This gene encodes a DEAD box protein, the function of which has not been determined.

**抗原:** Fusion protein of human DDX27

**经过测试的应用:** ELISA, WB, IHC

**推荐稀释比:** IHC: 20-100; WB: 200-1000; ELISA: 5000-10000

**种属反应性:** Rabbit

**克隆性:** Rabbit Polyclonal

**亚型:** Immunogen-specific rabbit IgG

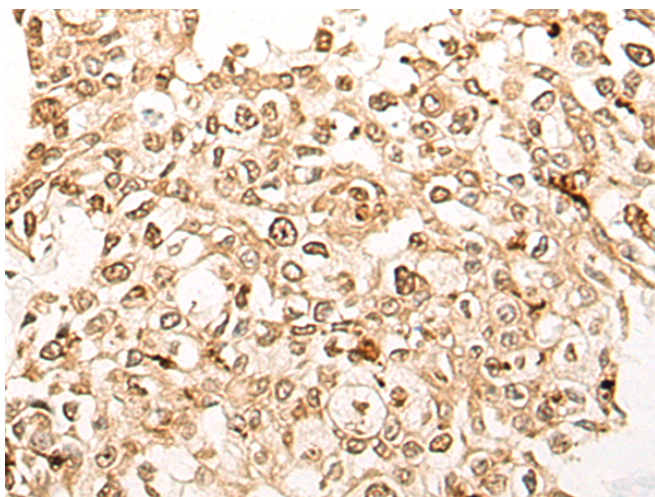
**纯化:** Antigen affinity purification

**种属反应性:** Human, Mouse

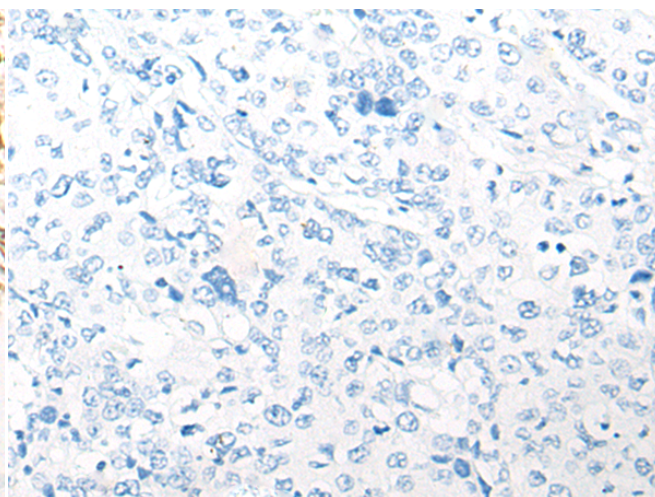
**成分:** PBS (without Mg<sup>2+</sup> and Ca<sup>2+</sup>), pH 7.4, 150 mM NaCl, 0.05% Sodium Azide and 40% glycerol

**研究领域:** Epigenetics and Nuclear Signaling

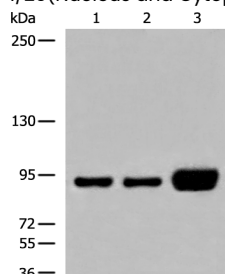
**储存和运输:** Store at -20°C. Avoid repeated freezing and thawing



Immunohistochemistry analysis of paraffin embedded Human prostate cancer tissue using 212306 (DDX27 Antibody) at a dilution of 1/20 (Nucleus and Cytoplasm).



In comparison with the IHC on the left, the same paraffin-embedded Human prostate cancer tissue is first treated with the fusion protein and then with 212306 (Anti-DDX27 Antibody) at dilution 1/20.



Gel: 6% SDS-PAGE, Lysate: 40 µg;

Lane 1-3: HEPG2, Hela and K562 cell lysates;

Primary antibody: 212306 (DDX27 Antibody) at dilution 1/250;

Secondary antibody: Goat anti rabbit IgG at 1/8000 dilution;

Exposure time: 2 seconds