

DDX21 RABBIT PAB

货号: S218588

产品全名: DDX21 兔多抗

基因符号 RH; GUA; GURDB; II/Gu; RH II/Gu; RH-II/GU; gu-alpha; RH-II/GuA

UNIPROT ID: Q9NR30 (Gene Accession - BC008071)

背景: DEAD box proteins, characterized by the conserved motif Asp-Glu-Ala-Asp (DEAD), are putative RNA helicases. They are implicated in a number of cellular processes involving alteration of RNA secondary structure such as translation initiation, nuclear and mitochondrial splicing, and ribosome and spliceosome assembly. Based on their distribution patterns, some members of this family are believed to be involved in embryogenesis, spermatogenesis, and cellular growth and division. This gene encodes a DEAD box protein, which is an antigen recognized by autoimmune antibodies from a patient with watermelon stomach disease. This protein unwinds double-stranded RNA, folds single-stranded RNA, and may play important roles in ribosomal RNA biogenesis, RNA editing, RNA transport, and general transcription. [provided by RefSeq, Jul 2008]

抗原: Fusion protein of human DDX21

经过测试的应用: ELISA, IHC

推荐稀释比: IHC: 100-300; ELISA: 5000-10000

种属反应性: Rabbit

克隆性: Rabbit Polyclonal

亚型: Immunogen-specific rabbit IgG

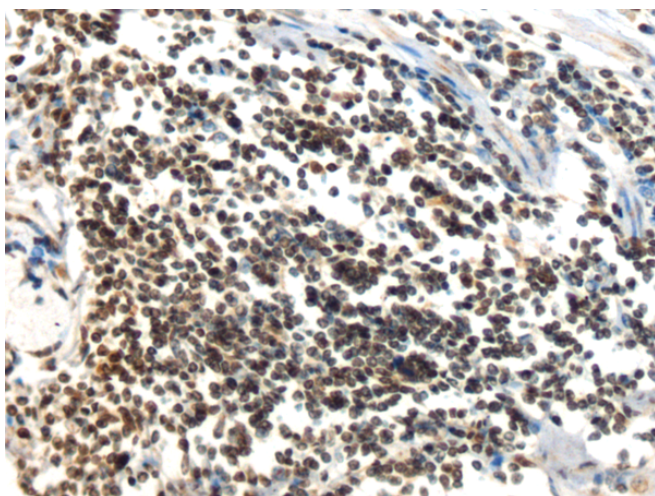
纯化: Antigen affinity purification

种属反应性: Human, Mouse, Rat

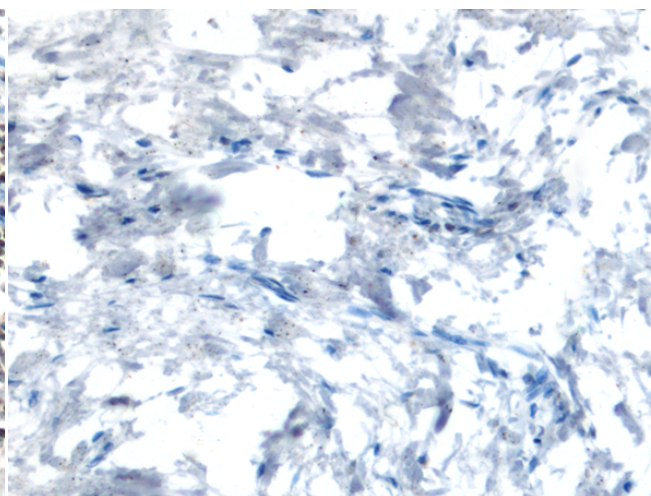
成分: PBS (without Mg²⁺ and Ca²⁺), pH 7.4, 150 mM NaCl, 0.05% Sodium Azide and 40% glycerol

研究领域: Epigenetics and Nuclear Signaling

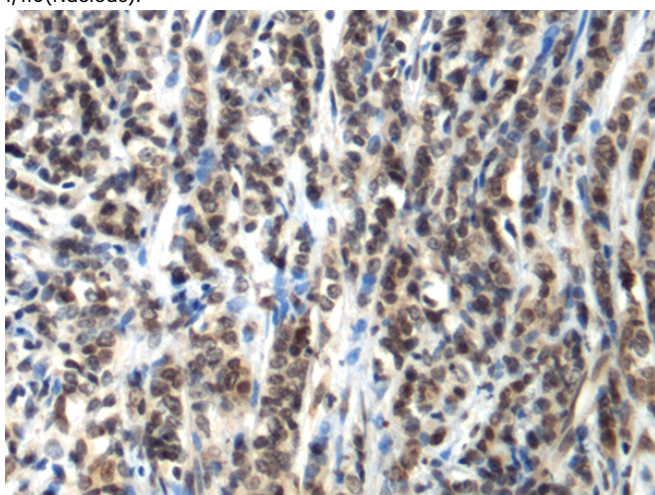
储存和运输: Store at -20°C. Avoid repeated freezing and thawing



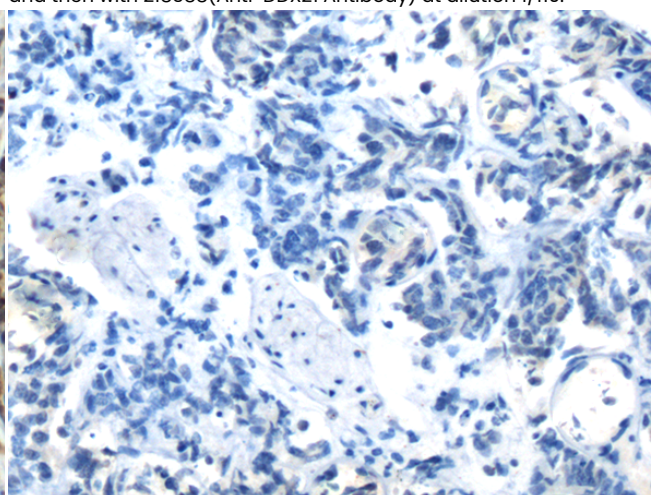
Immunohistochemistry analysis of paraffin embedded Human gastric cancer tissue using 218588(DDX21 Antibody) at a dilution of 1/110(Nucleus).



In comparison with the IHC on the left, the same paraffin-embedded Human gastric cancer tissue is first treated with the fusion protein and then with 218588(Anti-DDX21 Antibody) at dilution 1/110.



The image on the left is immunohistochemistry of paraffin-embedded Human prostate cancer tissue using 218588(Anti-DDX21 Antibody) at a dilution of 1/110.



In comparison with the IHC on the left, the same paraffin-embedded Human prostate cancer tissue is first treated with fusion protein and then with D224759(Anti-DDX21 Antibody) at dilution 1/110.



Product Description

Pioneering GTPase and Oncogene Product Development since 2010
