

DDT RABBIT PAB

货号: S221396

产品全名: DDT 兔多抗

基因符号 D-DT; DDCT; MIF2; MIF-2

UNIPROT ID: P30046 (Gene Accession - NP_001077861)

背景: D-dopachrome tautomerase converts D-dopachrome into 5,6-dihydroxyindole. The DDT gene is related to the migration inhibitory factor (MIF) in terms of sequence, enzyme activity, and gene structure. DDT and MIF are closely linked on chromosome 22.

抗原: Synthetic peptide of human DDT

经过测试的应用: ELISA, WB, IHC

推荐稀释比: IHC: 50-100;WB: 1000-5000;ELISA: 5000-10000

种属反应性: Rabbit

克隆性: Rabbit Polyclonal

亚型: Immunogen-specific rabbit IgG

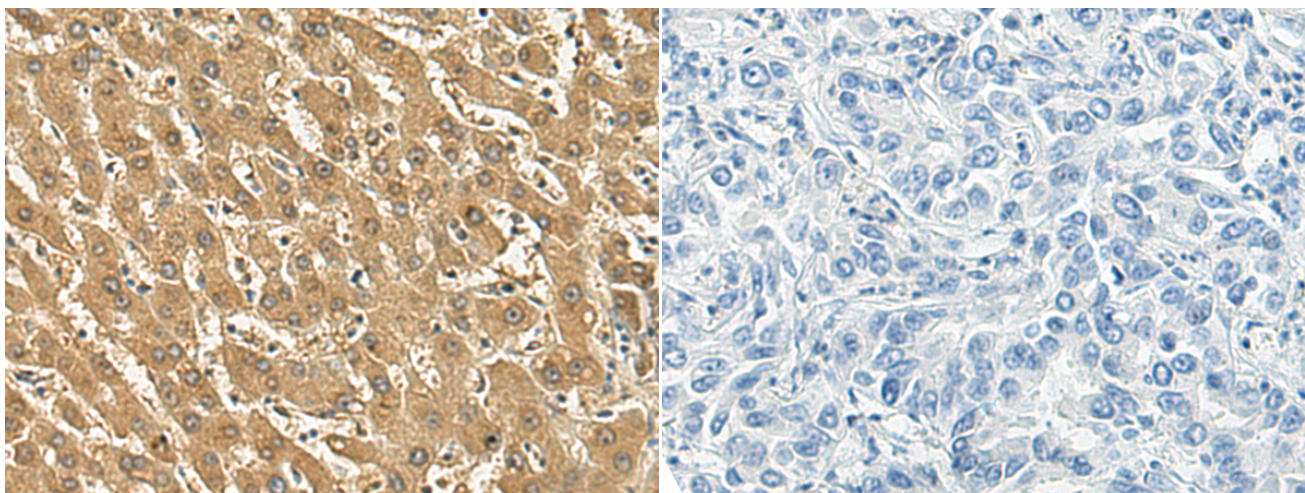
纯化: Antigen affinity purification

种属反应性: Human

成分: PBS (without Mg²⁺ and Ca²⁺), pH 7.4, 150 mM NaCl, 0.05% Sodium Azide and 40% glycerol

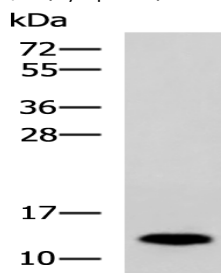
研究领域: Cell Biology

储存和运输: Store at -20°C. Avoid repeated freezing and thawing



Immunohistochemistry analysis of paraffin embedded Human liver cancer tissue using 221396(DDT Antibody) at a dilution of 1/40(Cytoplasm).

In comparison with the IHC on the left, the same paraffin-embedded Human liver cancer tissue is first treated with the synthetic peptide and then with 221396(Anti-DDT Antibody) at dilution 1/40.



Gel: 12%SDS-PAGE, Lysate: 40 µg;

Lane: Human liver tissue lysate;

Primary antibody: 221396(DDT Antibody) at dilution 1/800;

Secondary antibody: HRP-conjugated Goat anti rabbit IgG at 1/5000 dilution;

Exposure time: 2 minutes