

## DDI1 RABBIT PAB

货号: S218583

产品全名: DDI1 兔多抗

基因符号

**UNIPROT ID:** Q8WTU0 (Gene Accession - BC022017)

**背景:** DDI1 and DDI2 are ubiquitin receptor homologs of the *Saccharomyces cerevisiae* *ddi1* protein, which is involved in regulation of the cell cycle and the late secretory pathway. DDI1 is a 396 amino acid protein that contains one ubiquitin-like domain. The gene encoding DDI1 maps to human chromosome 11, which makes up around 4% of human genomic DNA and is considered a gene and disease association dense chromosome. The chromosome 11 encoded *Atm* gene is important for regulation of cell cycle arrest and apoptosis following double strand DNA breaks. *Atm* mutation leads to the disorder known as ataxia-telangiectasia. The blood disorders Sickle cell anemia and  $\beta$  thalassemia are caused by HBB gene mutations. Wilms' tumors, WAGR syndrome and Denys-Drash syndrome are associated with mutations of the *WT1* gene.

**抗原:** Fusion protein of human DDI1

**经过测试的应用:** ELISA, IHC

**推荐稀释比:** IHC: 20-100; ELISA: 5000-10000

**种属反应性:** Rabbit

**克隆性:** Rabbit Polyclonal

**亚型:** Immunogen-specific rabbit IgG

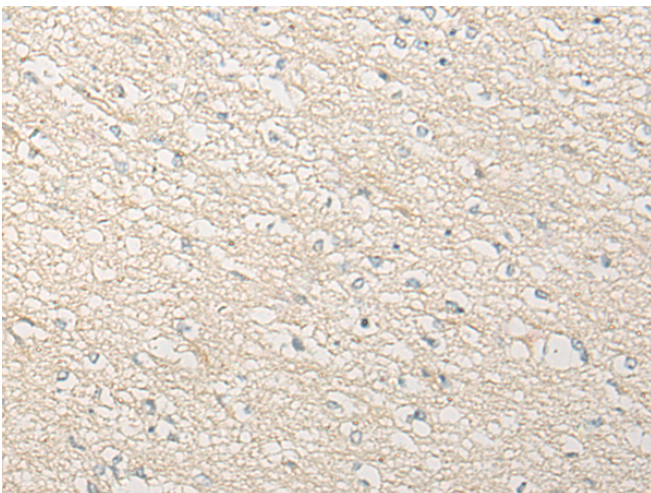
**纯化:** Antigen affinity purification

**种属反应性:** Human, Mouse, Rat

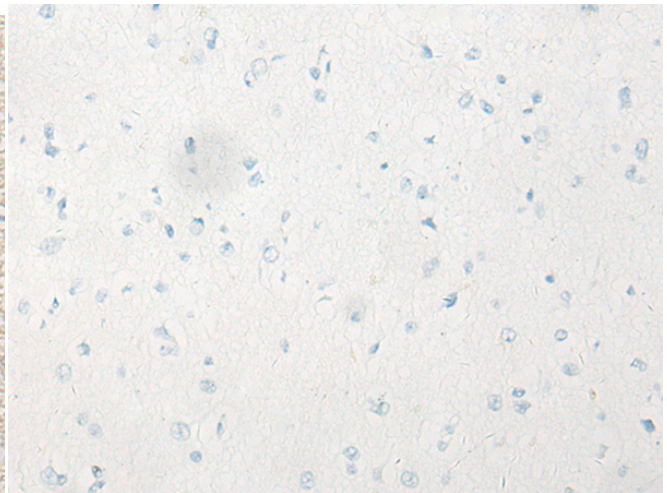
**成分:** PBS (without Mg<sup>2+</sup> and Ca<sup>2+</sup>), pH 7.4, 150 mM NaCl, 0.05% Sodium Azide and 40% glycerol

**研究领域:** Cell Biology

**储存和运输:** Store at -20°C. Avoid repeated freezing and thawing



Immunohistochemistry analysis of paraffin embedded Human brain tissue using 218583(DDI1 Antibody) at a dilution of 1/40(Cytoplasm).



In comparison with the IHC on the left, the same paraffin-embedded Human brain tissue is first treated with the fusion protein and then with 218583(Anti-DDI1 Antibody) at dilution 1/40.