

DDB1 RABBIT PAB

货号: S219738

产品全名: DDB1 兔多抗

基因符号 XPE, DDDBA, XAPI, XPCE, XPE-BF, UV-DDB1

UNIPROT ID: Q16531 (Gene Accession - NP_001914)

背景: The protein encoded by this gene is the large subunit (p127) of the heterodimeric DNA damage-binding (DDB) complex while another protein (p48) forms the small subunit. This protein complex functions in nucleotide-excision repair and binds to DNA following UV damage. Defective activity of this complex causes the repair defect in patients with xeroderma pigmentosum complementation group E (XPE) - an autosomal recessive disorder characterized by photosensitivity and early onset of carcinomas. However, it remains for mutation analysis to demonstrate whether the defect in XPE patients is in this gene or the gene encoding the small subunit. In addition, Best vitelliform macular dystrophy is mapped to the same region as this gene on 11q, but no sequence alternations of this gene are demonstrated in Best disease patients. The protein encoded by this gene also functions as an adaptor molecule for the cullin 4 (CUL4) ubiquitin E3 ligase complex by facilitating the binding of substrates to this complex and the ubiquitination of proteins.

抗原: Synthetic peptide of human DDB1

经过测试的应用: ELISA, WB, IHC

推荐稀释比: IHC: 10-100;WB: 200-1000;ELISA: 500-5000

种属反应性: Rabbit

克隆性: Rabbit Polyclonal

亚型: Immunogen-specific rabbit IgG

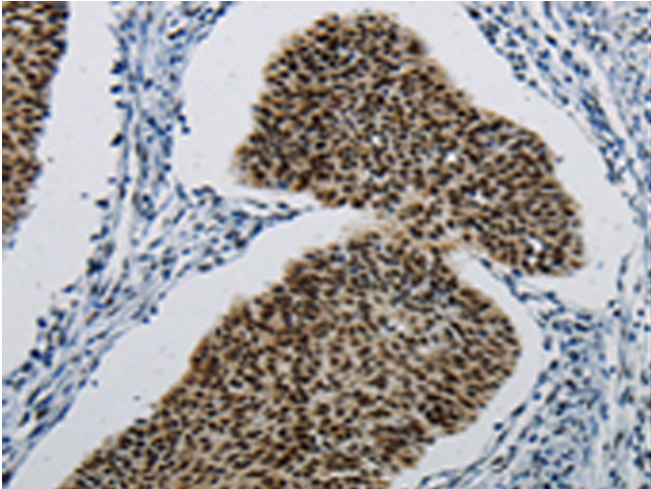
纯化: Antigen affinity purification

种属反应性: Human, Mouse, Rat

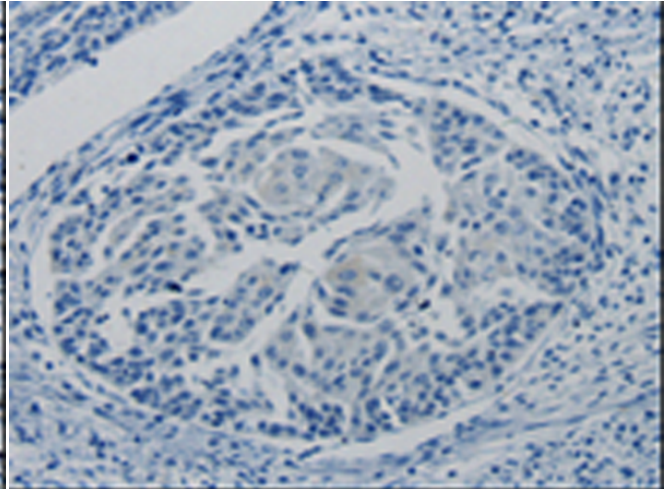
成分: PBS (without Mg²⁺ and Ca²⁺), pH 7.4, 150 mM NaCl, 0.05% Sodium Azide and 40% glycerol

研究领域: Epigenetics and Nuclear Signaling

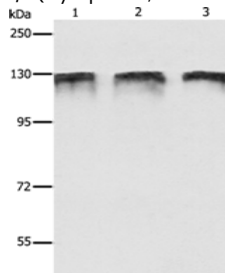
储存和运输: Store at -20°C. Avoid repeated freezing and thawing



Immunohistochemistry analysis of paraffin embedded Human cervical cancer tissue using 219738 (DDB1 Antibody) at a dilution of 1/5 (Cytoplasm, Nucleus).



In comparison with the IHC on the left, the same paraffin-embedded Human cervical cancer tissue is first treated with the synthetic peptide and then with 219738 (Anti-DDB1 Antibody) at dilution 1/5.



Gel: 8%SDS-PAGE, Lysate: 40 µg;

Lane 1-3: MCF7 cells, HeLa cells, HepG2 cells;

Primary antibody: 219738 (DDB1 Antibody) at dilution 1/350;

Secondary antibody: Goat anti rabbit IgG at 1/8000 dilution;

Exposure time: 1 minute



Product Description

Pioneering GTPase and Oncogene Product Development since 2010
