

DDB1 RABBIT MAB

货号: N263298

产品全名: DDB1 兔单克隆抗体

基因符号 XPE; DDBA; XAPI; XPCE; XPE-BF; UV-DDB1

UNIPROT ID: Q16531

背景: Required for DNA repair. Binds to DDB2 to form the UV-damaged DNA-binding protein complex (the UV-DDB complex). The UV-DDB complex may recognize UV-induced DNA damage and recruit proteins of the nucleotide excision repair pathway (the NER pathway) to initiate DNA repair.

抗原: A synthetic peptide of human DDB1

经过测试的应用: WB,IHC-F,IHC-P,ICC/IF,IP

推荐稀释比: WB: 1/500-1/1000 IHC: 1/50-1/100 IF: 1/50-1/200 IP: 1/20

种属反应性: Rabbit

克隆性: Rabbit Monoclonal

克隆编号: R07-2A3

分子量: Calculated MW: 127 kDa; Observed MW: 127 kDa

亚型: IgG

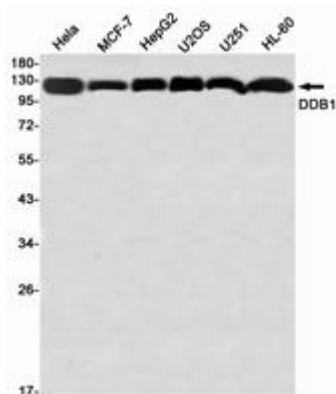
纯化: Affinity Purified

种属反应性: Human,Mouse

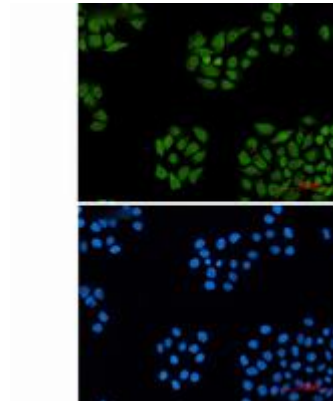
成分: PBS (without Mg²⁺ and Ca²⁺), pH 7.3 containing 50% glycerol, 0.5% BSA and 0.02% sodium azide

研究领域: Epigenetics and Nuclear Signaling

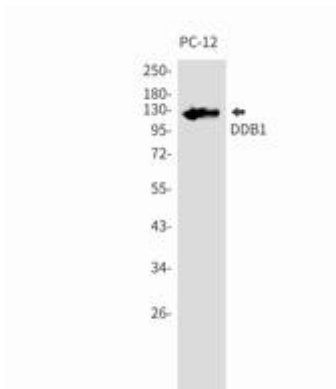
储存和运输: Store at -20°C. Avoid repeated freezing and thawing



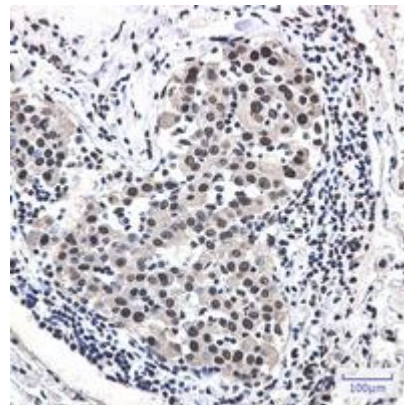
Western blot analysis of DDB1 in HeLa, MCF-7, HepG2, U2OS, U251, HL-60 lysates using DDB1 antibody



Immunocytochemistry analysis of DDB1 (green) in HeLa using DDB1 antibody, and DAPI (blue).



Western blot analysis of DDB1 in PC-12 lysates using DDB1 antibody.



Immunohistochemistry analysis of paraffin-embedded Human lung cancer using DDB1 antibody. High-pressure and temperature Sodium Citrate pH 6.0 was used for antigen retrieval.