

DCP1B RABBIT PAB

货号: S218578

产品全名: DCP1B 兔多抗

基因符号: DCP1

UNIPROT ID: Q8IZD4 (Gene Accession - BC043437)

背景: This gene encodes a member of a family of proteins that function in removing the 5' cap from mRNAs, which is a step in regulated mRNA decay. This protein localizes to cytoplasmic foci which are the site of mRNA breakdown and turnover. Alternative splicing results in multiple transcript variants.

抗原: Fusion protein of human DCP1B

经过测试的应用: ELISA, WB, IHC

推荐稀释比: IHC: 50-200;WB: 500-2000;ELISA: 2000-5000

种属反应性: Rabbit

克隆性: Rabbit Polyclonal

亚型: Immunogen-specific rabbit IgG

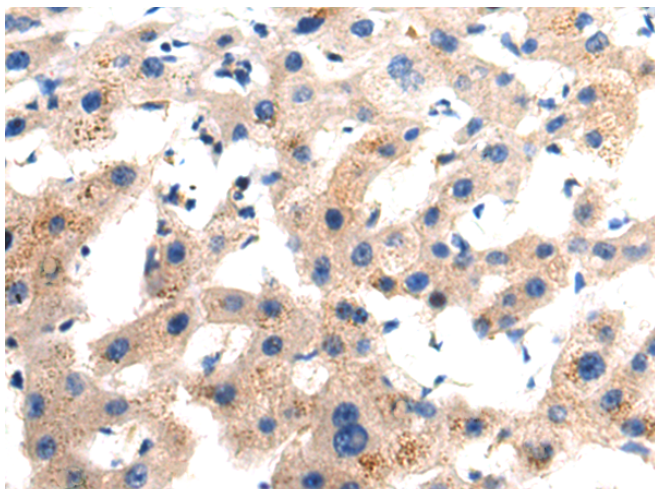
纯化: Antigen affinity purification

种属反应性: Human

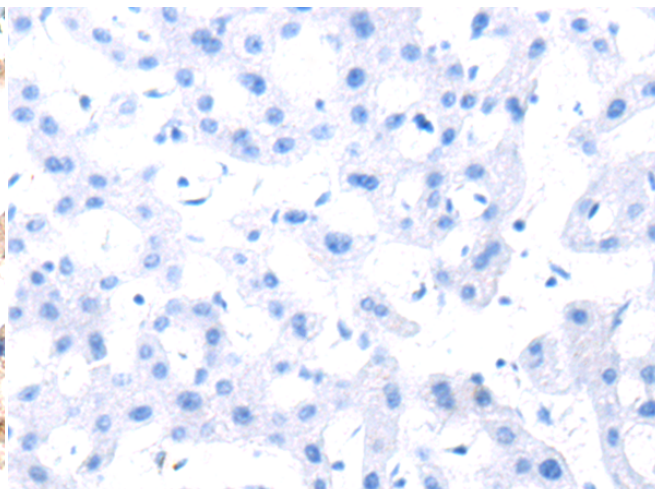
成分: PBS (without Mg²⁺ and Ca²⁺), pH 7.4, 150 mM NaCl, 0.05% Sodium Azide and 40% glycerol

研究领域: Epigenetics and Nuclear Signaling

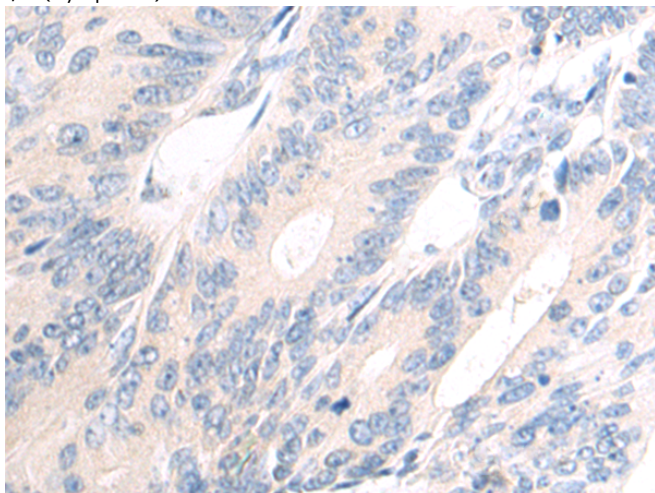
储存和运输: Store at -20°C. Avoid repeated freezing and thawing



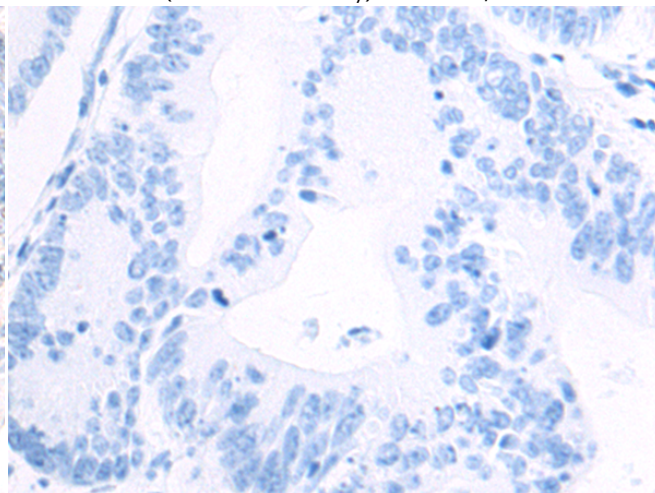
Immunohistochemistry analysis of paraffin embedded Human liver cancer tissue using 218578(DCPIB Antibody) at a dilution of 1/70(Cytoplasm).



In comparison with the IHC on the left, the same paraffin-embedded Human liver cancer tissue is first treated with the fusion protein and then with 218578(Anti-DCPIB Antibody) at dilution 1/70.

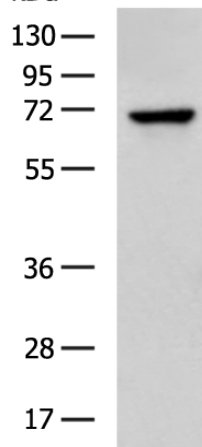


The image on the left is immunohistochemistry of paraffin-embedded Human colorectal cancer tissue using 218578(Anti-DCPIB Antibody) at a dilution of 1/70.



In comparison with the IHC on the left, the same paraffin-embedded Human colorectal cancer tissue is first treated with fusion protein and then with D224745(Anti-DCPIB Antibody) at dilution 1/70.

kDa



Gel: 8%SDS-PAGE, Lysate: 40 µg;
Lane: Ramos cell lysate;
Primary antibody: 218578(DCPIB Antibody) at dilution 1/800;
Secondary antibody: HRP-conjugated Goat anti rabbit IgG at 1/5000 dilution;
Exposure time: 1 minute



Product Description

Pioneering GTPase and Oncogene Product Development since 2010
