

## DCLK1 RABBIT PAB

货号: S220069

产品全名: DCLK1 兔多抗

基因符号: CL1; DCLK; CLICK1; DCDC3A; DCAMK1

**UNIPROT ID:** O15075 (Gene Accession - XP\_005266649)

**背景:** This gene encodes a member of the protein kinase superfamily and the doublecortin family. The protein encoded by this gene contains two N-terminal doublecortin domains, which bind microtubules and regulate microtubule polymerization, a C-terminal serine/threonine protein kinase domain, which shows substantial homology to Ca<sup>2+</sup>/calmodulin-dependent protein kinase, and a serine/proline-rich domain in between the doublecortin and the protein kinase domains, which mediates multiple protein-protein interactions. The microtubule-polymerizing activity of the encoded protein is independent of its protein kinase activity.

**抗原:** Synthetic peptide of human DCLK1

**经过测试的应用:** ELISA, IHC

**推荐稀释比:** IHC: 25-100; ELISA: 1000-2000

**种属反应性:** Rabbit

**克隆性:** Rabbit Polyclonal

**亚型:** Immunogen-specific rabbit IgG

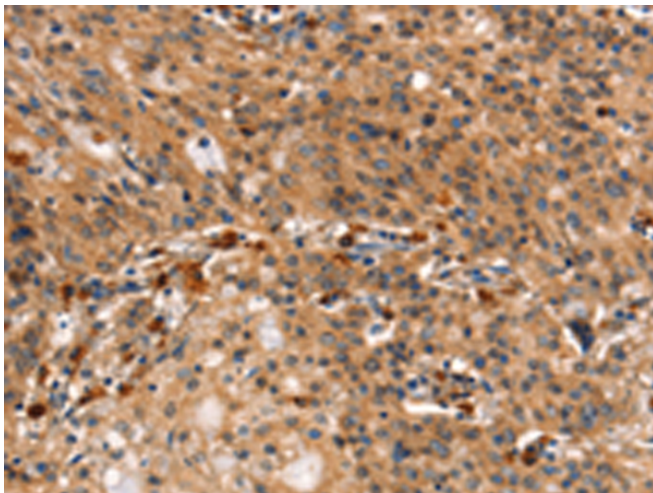
**纯化:** Antigen affinity purification

**种属反应性:** Human, Mouse

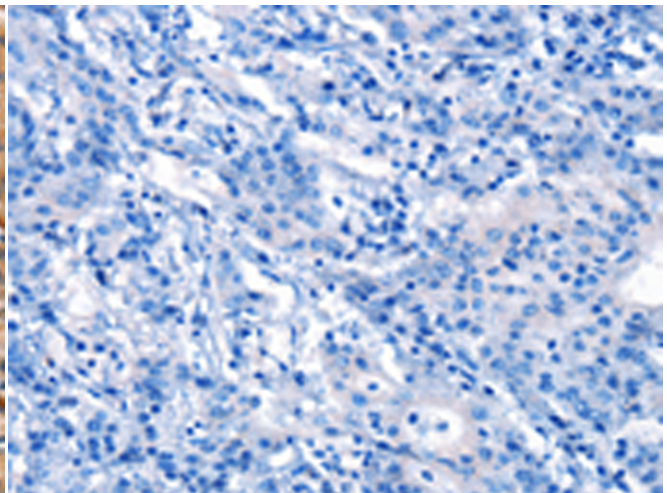
**成分:** PBS (without Mg<sup>2+</sup> and Ca<sup>2+</sup>), pH 7.4, 150 mM NaCl, 0.05% Sodium Azide and 40% glycerol

**研究领域:** Neuroscience

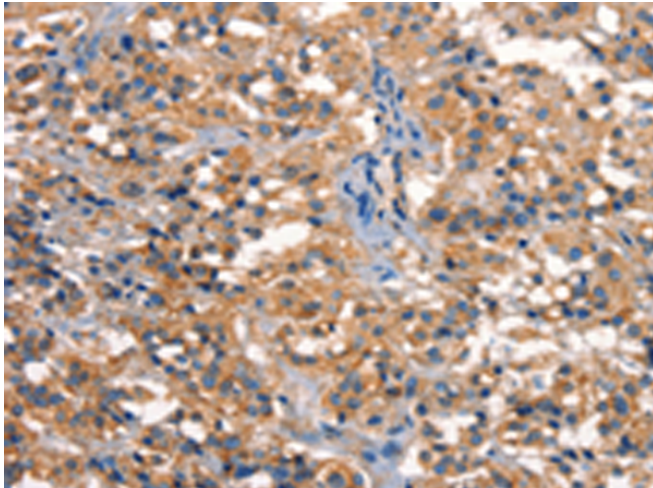
**储存和运输:** Store at -20°C. Avoid repeated freezing and thawing



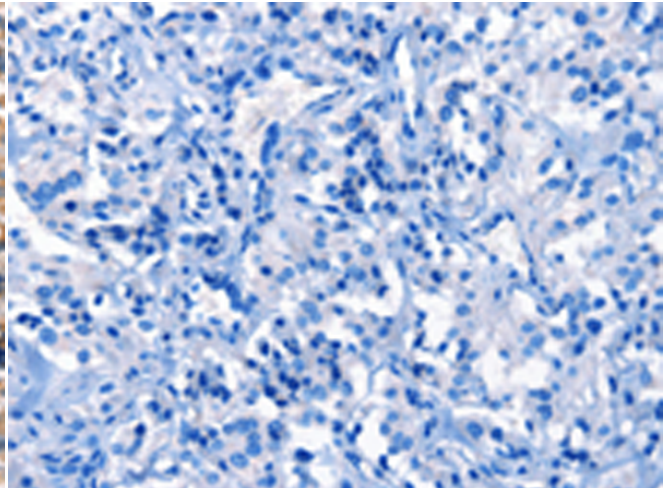
Immunohistochemistry analysis of paraffin embedded Human gastric cancer tissue using 220069(DCLK1 Antibody) at a dilution of 1/25(Cytoplasm).



In comparison with the IHC on the left, the same paraffin-embedded Human gastric cancer tissue is first treated with the synthetic peptide and then with 220069(Anti-DCLK1 Antibody) at dilution 1/25.



The image on the left is immunohistochemistry of paraffin-embedded Human thyroid cancer tissue using 220069(Anti-DCLK1 Antibody) at a dilution of 1/25.



In comparison with the IHC on the left, the same paraffin-embedded Human thyroid cancer tissue is first treated with synthetic peptide and then with D260902(Anti-DCLK1 Antibody) at dilution 1/25.

