

DCI RABBIT MAB

货号: N262120

产品全名: DCI 兔单克隆抗体

基因符号 ECII; DCI; Enoyl-CoA delta isomerase 1; mitochondrial; 3; 2-trans-enoyl-CoA isomerase; Delta(3); Delta(2)-enoyl-CoA isomerase; D3; D2-enoyl-CoA isomerase; Dodecenoyl-CoA isomerase

UNIPROT ID: P42126

背景: Able to isomerize both 3-cis and 3-trans double bonds into the 2-trans form in a range of enoyl-CoA species.

抗原: A synthetic peptide of human DCI

经过测试的应用: WB,IHC-F,IHC-P,ICC/IF

推荐稀释比: WB: 1/500-1/1000 IHC: 1/50-1/100 IF: 1/50-1/200

种属反应性: Rabbit

克隆性: Rabbit Monoclonal

克隆编号: R05-2C8

分子量: Calculated MW: 33 kDa; Observed MW: 33 kDa

亚型: IgG

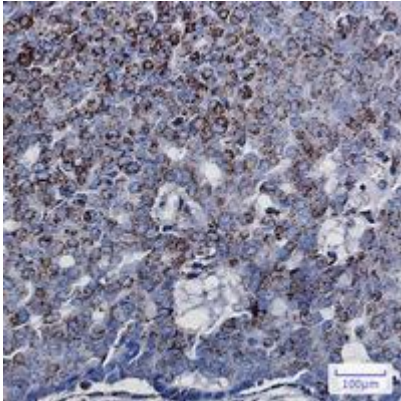
纯化: Affinity Purified

种属反应性: Human, Mouse and Rat

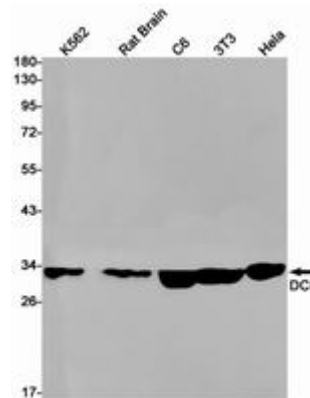
成分: PBS (without Mg²⁺ and Ca²⁺), pH 7.3 containing 50% glycerol, 0.5% BSA and 0.02% sodium azide

研究领域: Tags & Cell Markers

储存和运输: Store at -20°C. Avoid repeated freezing and thawing



Immunohistochemistry analysis of paraffin-embedded Human breast cancer using DCI antibody. High-pressure and temperature Sodium Citrate pH 6.0 was used for antigen retrieval.



Western blot analysis of DCI in K562, rat Brain, C6, 3T3, HeLa lysates using DCI antibody.