

DCBLD2 RABBIT PAB

货号: S217343

产品全名: DCBLD2 兔多抗

基因符号 ESDN; CLCP1

UNIPROT ID: Q96PD2 (Gene Accession - BC029658)

背景: CLCP1 (CUB, LCCL and coagulation factor V/VIII-homology domains protein 1), also known as DCBLD2 (discoidin, CUB and LCCL domain containing 2) or ESDN, is a 775 amino acid single-pass type I membrane protein that contains one CUB domain, one LCCL domain and one F5/8 type C domain. Expressed at high levels in heart, testis and skeletal muscle, CLCP1 is thought to regulate vascular smooth muscle cell (VSMC) proliferation and remodeling and may be involved in the transformation and metastasis of various cancers, such as metastatic lung cancer and gastric carcinoma.

抗原: Fusion protein of human DCBLD2

经过测试的应用: ELISA, IHC

推荐稀释比: IHC: 100-300; ELISA: 2000-10000

种属反应性: Rabbit

克隆性: Rabbit Polyclonal

亚型: Immunogen-specific rabbit IgG

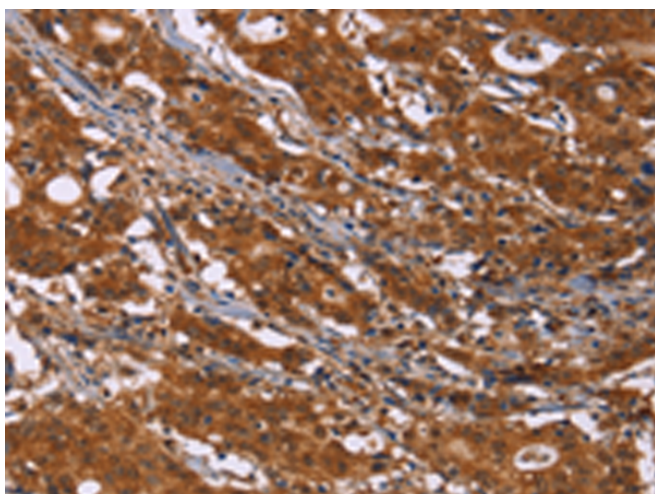
纯化: Antigen affinity purification

种属反应性: Human, Mouse, Rat

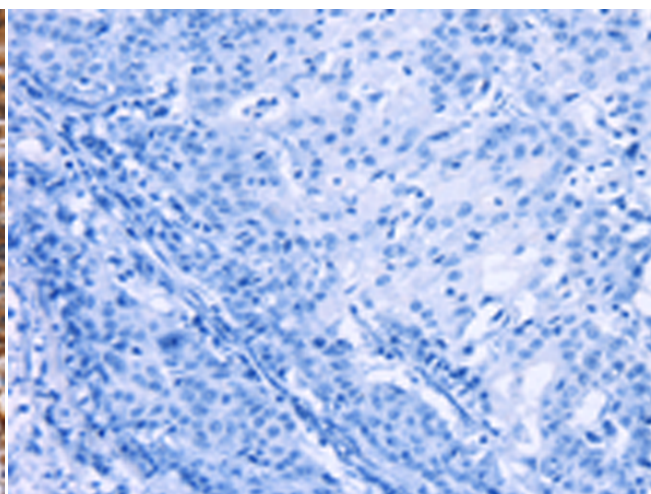
成分: PBS (without Mg²⁺ and Ca²⁺), pH 7.4, 150 mM NaCl, 0.05% Sodium Azide and 40% glycerol

研究领域: Signal Transduction, Cardiovascular

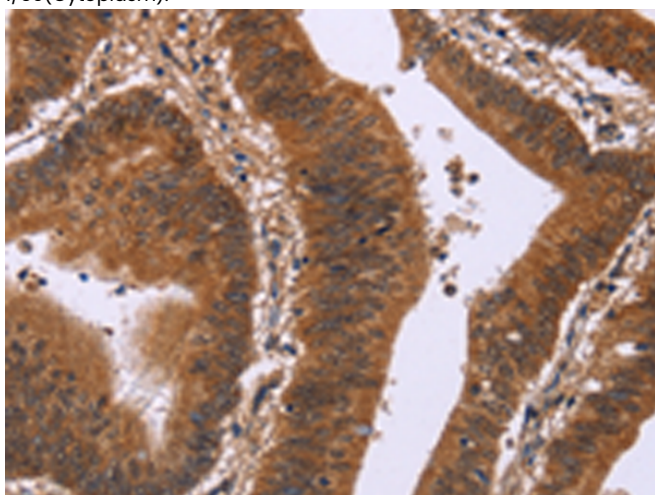
储存和运输: Store at -20°C. Avoid repeated freezing and thawing



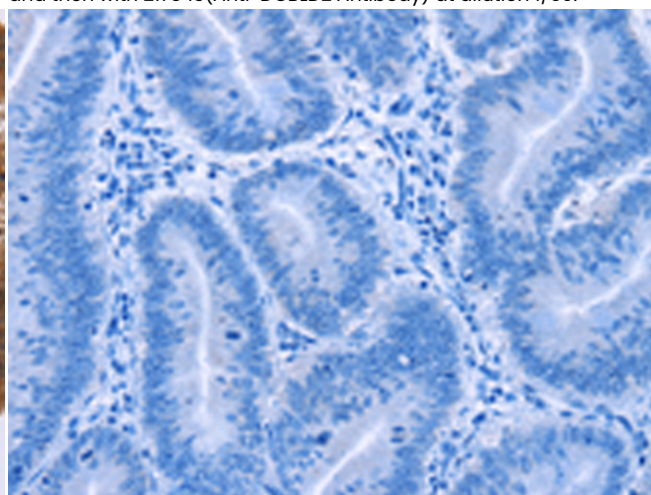
Immunohistochemistry analysis of paraffin embedded Human gastric cancer tissue using 217343(DCBLD2 Antibody) at a dilution of 1/50(Cytoplasm).



In comparison with the IHC on the left, the same paraffin-embedded Human gastric cancer tissue is first treated with the fusion protein and then with 217343(Anti-DCBLD2 Antibody) at dilution 1/50.



The image on the left is immunohistochemistry of paraffin-embedded Human colon cancer tissue using 217343(Anti-DCBLD2 Antibody) at a dilution of 1/50.



In comparison with the IHC on the left, the same paraffin-embedded Human colon cancer tissue is first treated with fusion protein and then with D222209(Anti-DCBLD2 Antibody) at dilution 1/50.



Product Description

Pioneering GTPase and Oncogene Product Development since 2010
