

## DCBLD1 RABBIT PAB

货号: S212295

产品全名: DCBLD1 兔多抗

基因符号: dJ94G16.1

**UNIPROT ID:** Q8N8Z6 (Gene Accession - BC035671)

背景: The specific function of the protein remains unknown.

抗原: Fusion protein of human DCBLD1

经过测试的应用: ELISA, IHC

推荐稀释比: IHC: 50-200; ELISA: 5000-10000

种属反应性: Rabbit

克隆性: Rabbit Polyclonal

亚型: Immunogen-specific rabbit IgG

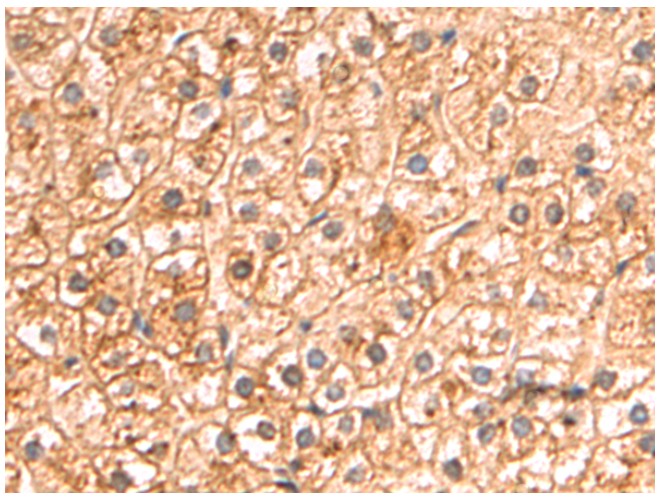
纯化: Antigen affinity purification

种属反应性: Human

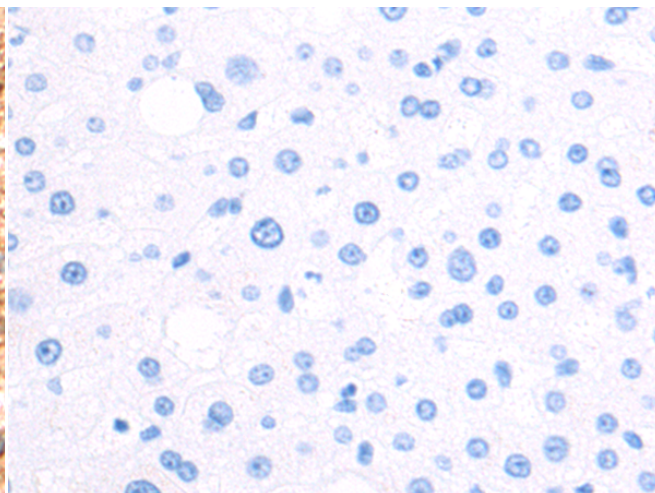
成分: PBS (without Mg<sup>2+</sup> and Ca<sup>2+</sup>), pH 7.4, 150 mM NaCl, 0.05% Sodium Azide and 40% glycerol

研究领域: Cell Biology

储存和运输: Store at -20°C. Avoid repeated freezing and thawing



Immunohistochemistry analysis of paraffin embedded Human liver cancer tissue using 212295(DCBLD1 Antibody) at a dilution of 1/60(Cytoplasm and Cell membrane).



In comparison with the IHC on the left, the same paraffin-embedded Human liver cancer tissue is first treated with the fusion protein and then with 212295(Anti-DCBLD1 Antibody) at dilution 1/60.