

DCAMKL1 RABBIT MAB

货号: N262119

产品全名: DCAMKL1 兔单克隆抗体

基因符号 doublecortin-like kinase 1; CLI; DCLK; CLICK1; DCDC3A; DCAMKL1

UNIPROT ID: O15075

背景: Probable kinase that may be involved in a calcium-signaling pathway controlling neuronal migration in the developing brain. May also participate in functions of the mature nervous system.

抗原: A synthetic peptide of human DCAMKL1

经过测试的应用: WB,IHC-F,IHC-P,ICC/IF

推荐稀释比: WB: 1/500-1/1000 IHC: 1/50-1/100 IF: 1/50-1/200

种属反应性: Rabbit

克隆性: Rabbit Monoclonal

克隆编号: R05-8D6

分子量: Calculated MW: 82 kDa; Observed MW: 82 kDa

亚型: IgG

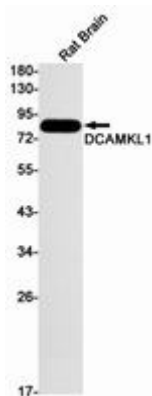
纯化: Affinity Purified

种属反应性: Human, Mouse and Rat

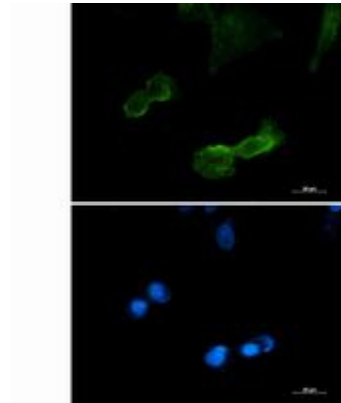
成分: PBS (without Mg²⁺ and Ca²⁺), pH 7.3 containing 50% glycerol, 0.5% BSA and 0.02% sodium azide

研究领域: Neuroscience

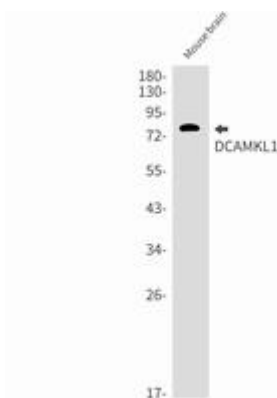
储存和运输: Store at -20°C. Avoid repeated freezing and thawing



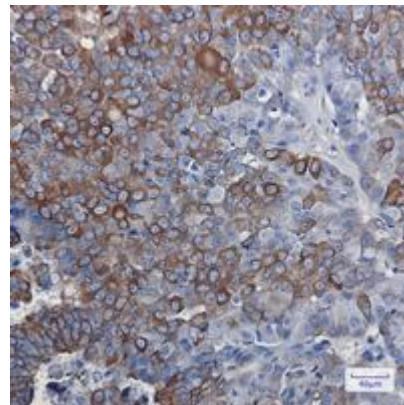
Western blot analysis of DCAMKL1 in rat Brain lysates using DCAMKL1 antibody



Immunocytochemistry analysis of DCAMKL1 (green) in U87-MG using DCAMKL1 antibody, and DAPI (blue).



Western blot analysis of DCAMKL1 in mouse brain lysates using DCAMKL1 antibody.



Immunohistochemistry analysis of paraffin-embedded Human breast cancer using DCAMKL1 antibody. High-pressure and temperature Sodium Citrate pH 6.0 was used for antigen retrieval.