

## DCAF5 RABBIT PAB

货号: S221884

产品全名: DCAF5 兔多抗

基因符号 BCRG2; BCRP2; WDR22; D14S1461E

**UNIPROT ID:** Q96JK2 (Gene Accession - NP\_003852)

背景: May function as a substrate receptor for CUL4-DBP1 E3 ubiquitin-protein ligase complex.

抗原: Synthetic peptide of human DCAF5

经过测试的应用: ELISA, IHC

推荐稀释比: IHC: 20-100; ELISA: 5000-10000

种属反应性: Rabbit

克隆性: Rabbit Polyclonal

亚型: Immunogen-specific rabbit IgG

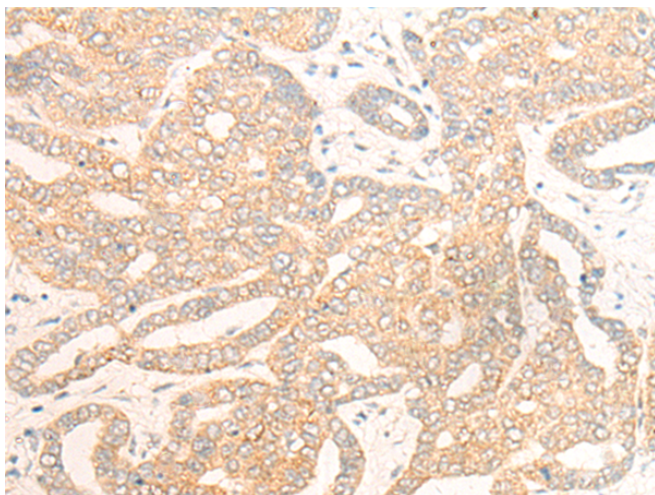
纯化: Antigen affinity purification

种属反应性: Human, Mouse

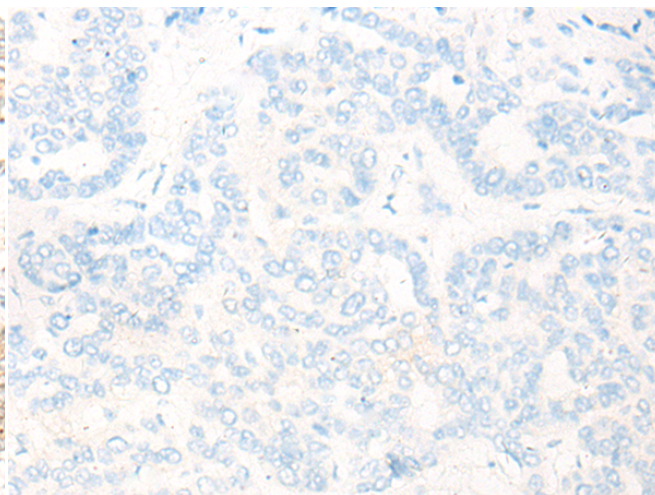
成分: PBS (without Mg<sup>2+</sup> and Ca<sup>2+</sup>), pH 7.4, 150 mM NaCl, 0.05% Sodium Azide and 40% glycerol

研究领域: Cell Biology

储存和运输: Store at -20°C. Avoid repeated freezing and thawing



Immunohistochemistry analysis of paraffin embedded Human liver cancer tissue using 221884(DCAF5 Antibody) at a dilution of 1/20(Cytoplasm).



In comparison with the IHC on the left, the same paraffin-embedded Human liver cancer tissue is first treated with the synthetic peptide and then with 221884(Anti-DCAF5 Antibody) at dilution 1/20.