

DCAF10 RABBIT PAB

货号: S219021

产品全名: DCAF10 兔多抗

基因符号: WDR32

UNIPROT ID: Q5QP82 (Gene Accession - BC003520)

背景: May function as a substrate receptor for CUL4-DDB1 E3 ubiquitin-protein ligase complex.

抗原: Fusion protein of human DCAF10

经过测试的应用: ELISA, IHC

推荐稀释比: IHC: 50-300; ELISA: 5000-10000

种属反应性: Rabbit

克隆性: Rabbit Polyclonal

亚型: Immunogen-specific rabbit IgG

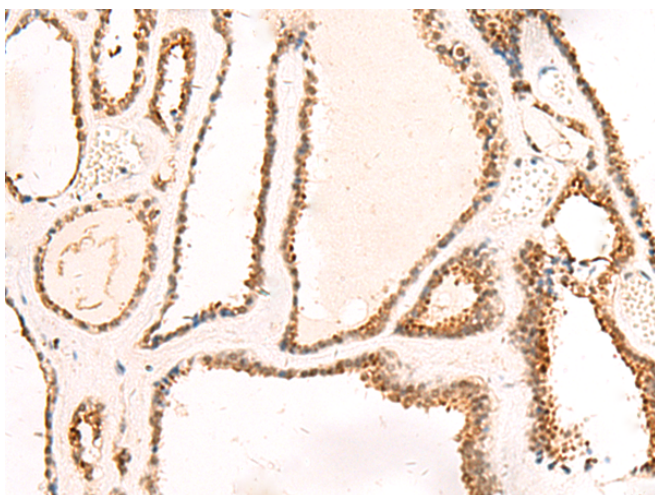
纯化: Antigen affinity purification

种属反应性: Human, Mouse

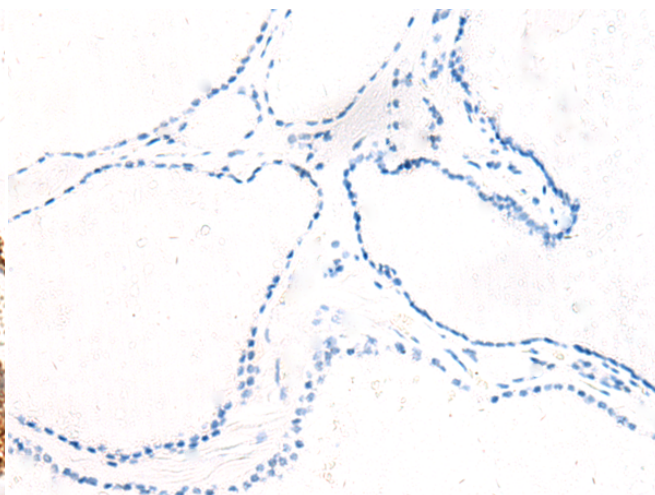
成分: PBS (without Mg²⁺ and Ca²⁺), pH 7.4, 150 mM NaCl, 0.05% Sodium Azide and 40% glycerol

研究领域: Cell Biology

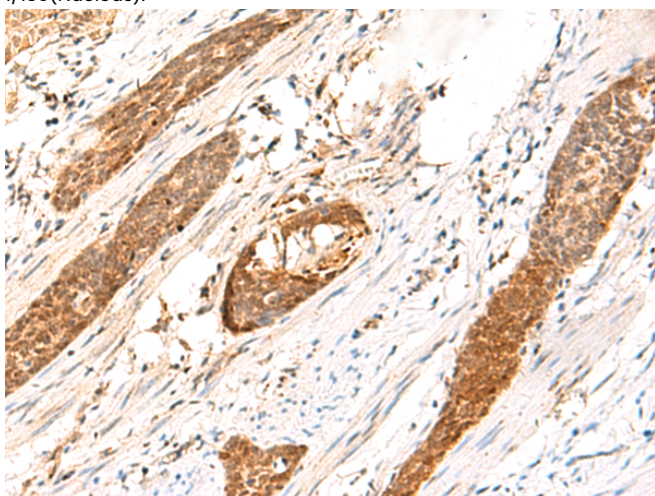
储存和运输: Store at -20°C. Avoid repeated freezing and thawing



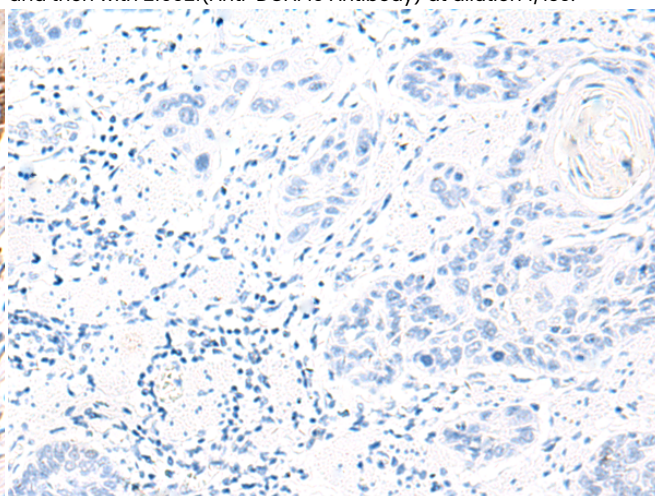
Immunohistochemistry analysis of paraffin embedded Human thyroid cancer tissue using 219021(DCAF10 Antibody) at a dilution of 1/130(Nucleus).



In comparison with the IHC on the left, the same paraffin-embedded Human thyroid cancer tissue is first treated with the fusion protein and then with 219021(Anti-DCAF10 Antibody) at dilution 1/130.



The image on the left is immunohistochemistry of paraffin-embedded Human esophagus cancer tissue using 219021(Anti-DCAF10 Antibody) at a dilution of 1/130.



In comparison with the IHC on the left, the same paraffin-embedded Human esophagus cancer tissue is first treated with fusion protein and then with D225666(Anti-DCAF10 Antibody) at dilution 1/130.



Product Description

Pioneering GTPase and Oncogene Product Development since 2010
