

## DCAF1 RABBIT PAB

货号: S222417

产品全名: DCAF1 兔多抗

基因符号 RIP; VPRBP

**UNIPROT ID:** Q9Y4B6 (Gene Accession - NP\_055518 )

**背景:** Enables estrogen receptor binding activity and histone kinase activity (H2A-T120 specific). Involved in cell competition in a multicellular organism; histone H2A-T120 phosphorylation; and negative regulation of transcription by RNA polymerase II. Located in fibrillar center and nucleoplasm. Part of Cul4-RING E3 ubiquitin ligase complex. Colocalizes with COP9 signalosome.

**抗原:** Synthetic peptide of human DCAF1

**经过测试的应用:** ELISA, IHC

**推荐稀释比:** IHC: 50-200; ELISA: 5000-10000

**种属反应性:** Rabbit

**克隆性:** Rabbit Polyclonal

**亚型:** Immunogen-specific rabbit IgG

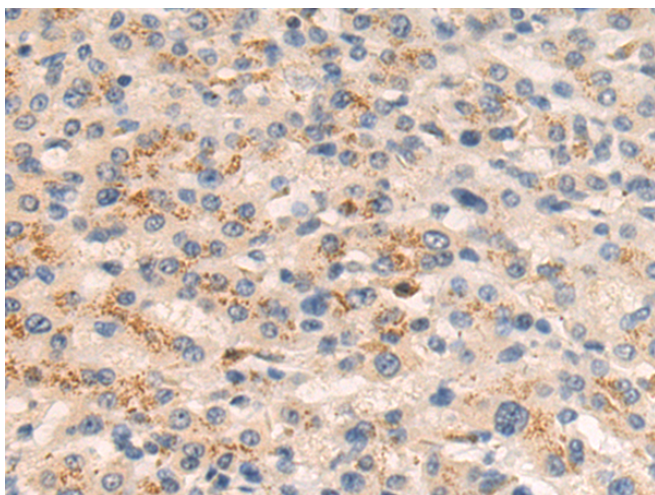
**纯化:** Antigen affinity purification

**种属反应性:** Human, Mouse

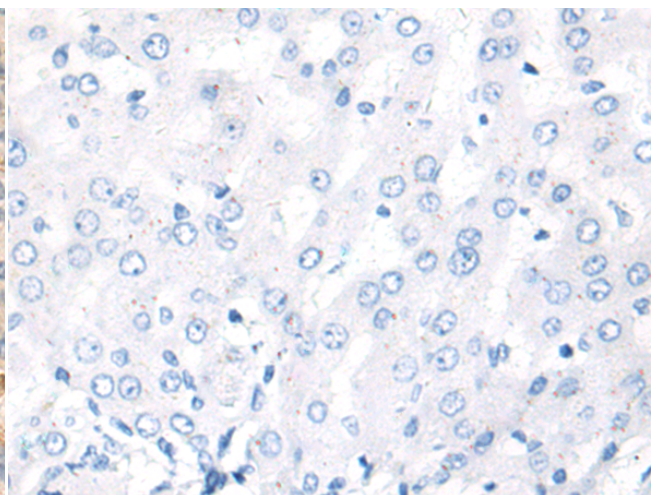
**成分:** PBS (without Mg<sup>2+</sup> and Ca<sup>2+</sup>), pH 7.4, 150 mM NaCl, 0.05% Sodium Azide and 40% glycerol

**研究领域:** Epigenetics and Nuclear Signaling

**储存和运输:** Store at -20°C. Avoid repeated freezing and thawing



Immunohistochemistry analysis of paraffin embedded Human liver cancer tissue using 222417(DCAF1 Antibody) at a dilution of 1/50(Cytoplasm).



In comparison with the IHC on the left, the same paraffin-embedded Human liver cancer tissue is first treated with the synthetic peptide and then with 222417(Anti-DCAF1 Antibody) at dilution 1/50.