

DBH RABBIT PAB

货号: S216464

产品全名: DBH 兔多抗

基因符号: DBM; ORTHYP1

UNIPROT ID: P09172 (Gene Accession - BC017174)

背景: The protein encoded by this gene is an oxidoreductase belonging to the copper type II, ascorbate-dependent monooxygenase family. The encoded protein, expressed in neurosecretory vesicles and chromaffin granules of the adrenal medulla, catalyzes the conversion of dopamine to norepinephrine, which functions as both a hormone and as the main neurotransmitter of the sympathetic nervous system. The enzyme encoded by this gene exists in both soluble and membrane-bound forms, depending on the absence or presence, respectively, of a signal peptide. Mutations in this gene cause dopamine beta-hydroxylase deficiency in human patients, characterized by deficits in autonomic and cardiovascular function, including hypotension and ptosis. Polymorphisms in this gene may play a role in a variety of psychiatric disorders.

抗原: Fusion protein of human DBH

经过测试的应用: ELISA, WB, IHC

推荐稀释比: IHC: 50-200;WB: 500-2000;ELISA: 5000-10000

种属反应性: Rabbit

克隆性: Rabbit Polyclonal

亚型: Immunogen-specific rabbit IgG

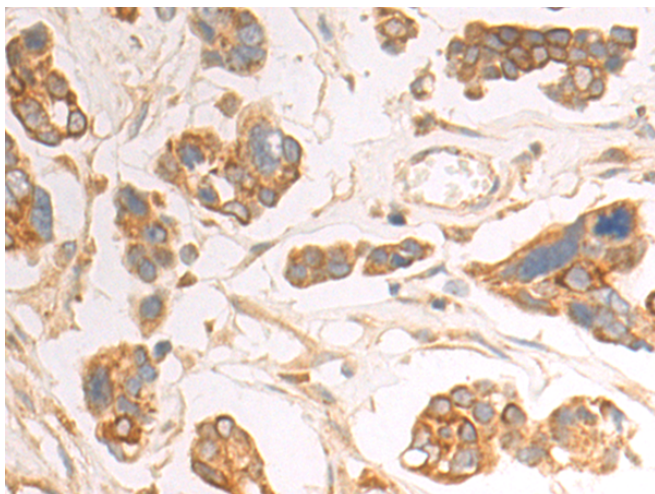
纯化: Antigen affinity purification

种属反应性: Human, Mouse

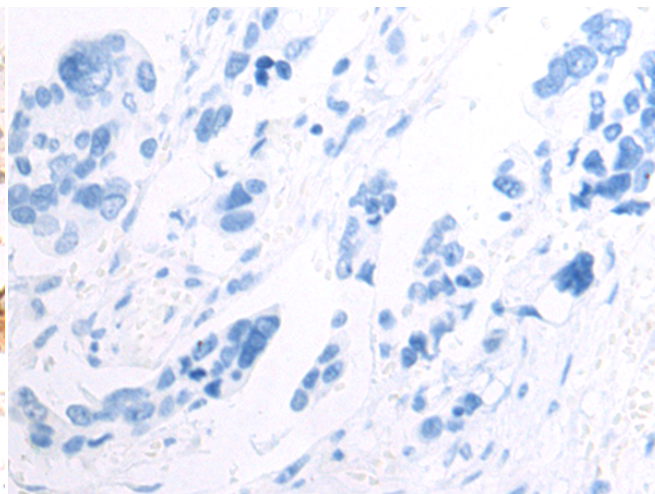
成分: PBS (without Mg²⁺ and Ca²⁺), pH 7.4, 150 mM NaCl, 0.05% Sodium Azide and 40% glycerol

研究领域: Cancer, Metabolism, Neuroscience

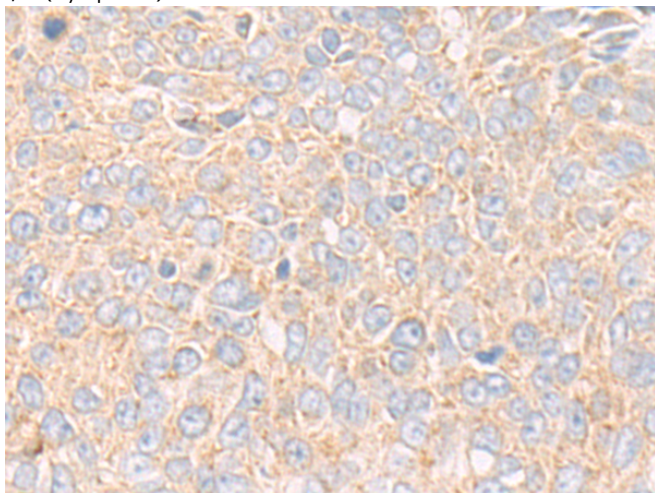
储存和运输: Store at -20°C. Avoid repeated freezing and thawing



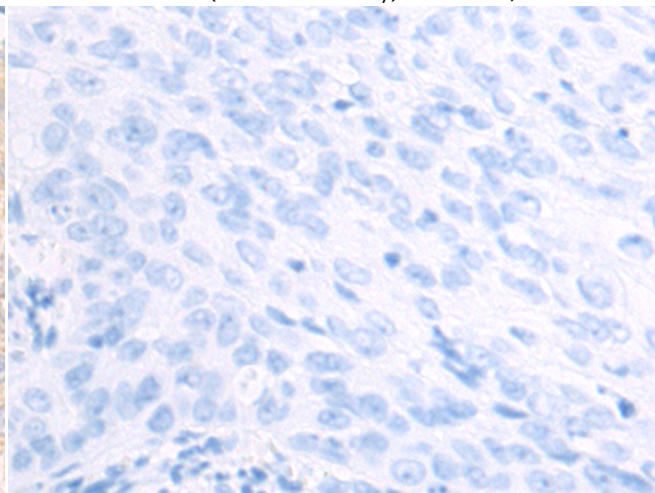
Immunohistochemistry analysis of paraffin embedded Human colorectal cancer tissue using 216464(DBH Antibody) at a dilution of 1/50(Cytoplasm).



In comparison with the IHC on the left, the same paraffin-embedded Human colorectal cancer tissue is first treated with the fusion protein and then with 216464(Anti-DBH Antibody) at dilution 1/50.

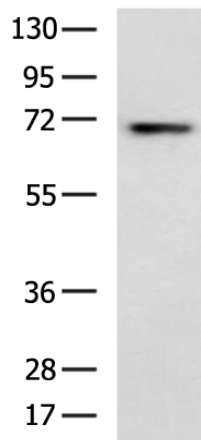


The image on the left is immunohistochemistry of paraffin-embedded Human esophagus cancer tissue using 216464(Anti-DBH Antibody) at a dilution of 1/50.



In comparison with the IHC on the left, the same paraffin-embedded Human esophagus cancer tissue is first treated with fusion protein and then with D220525(Anti-DBH Antibody) at dilution 1/50.

kDa



Gel: 8%SDS-PAGE, Lysate: 40 µg;
Lane: Mouse fetal liver tissue lysate;
Primary antibody: 216464(DBH Antibody) at dilution 1/550;
Secondary antibody: HRP-conjugated Goat anti rabbit IgG at 1/5000 dilution;
Exposure time: 5 seconds



Product Description

Pioneering GTPase and Oncogene Product Development since 2010
