

DAAM1 RABBIT PAB

货号: S220492

产品全名: DAAM1 兔多抗

基因符号

UNIPROT ID: Q9Y4D1 (Gene Accession - NP_001257449)

背景: Cell motility, adhesion, cytokinesis, and other functions of the cell cortex are mediated by reorganization of the actin cytoskeleton and several formin homology (FH) proteins have been associated with these processes. The protein encoded by this gene contains two FH domains and belongs to a novel FH protein subfamily implicated in cell polarity. A key regulator of cytoskeletal architecture, the small GTPase Rho, is activated during development by Wnt/Fz signaling to control cell polarity and movement. The protein encoded by this gene is thought to function as a scaffolding protein for the Wnt-induced assembly of a disheveled (Dvl)-Rho complex.

抗原: Synthetic peptide of human DAAM1

经过测试的应用: ELISA, WB, IHC

推荐稀释比: IHC: 50-200;WB: 200-1000;ELISA: 1000-2000

种属反应性: Rabbit

克隆性: Rabbit Polyclonal

亚型: Immunogen-specific rabbit IgG

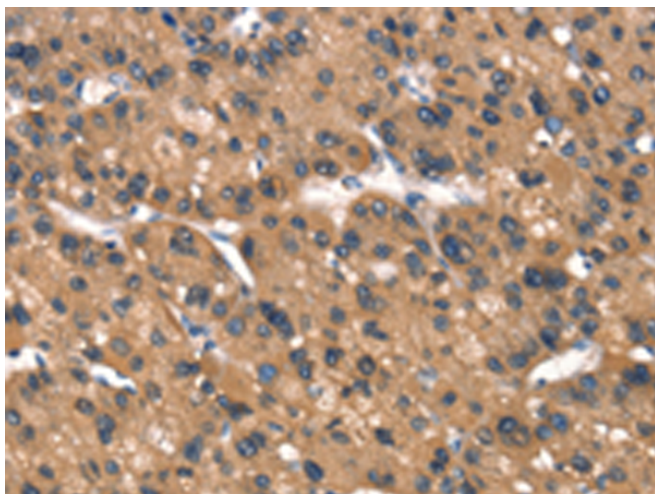
纯化: Antigen affinity purification

种属反应性: Human, Mouse

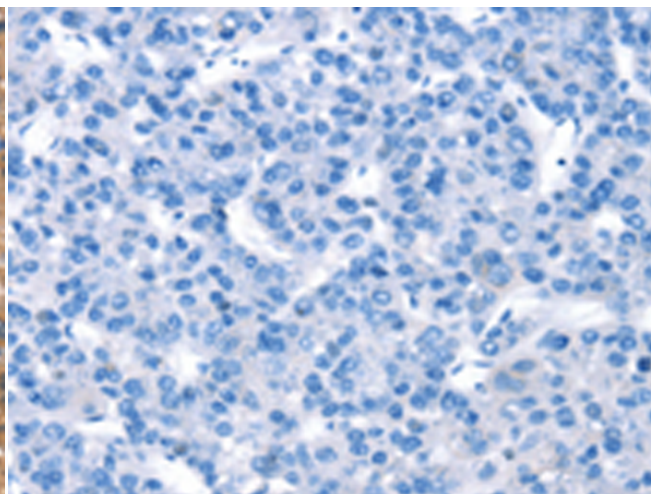
成分: PBS (without Mg²⁺ and Ca²⁺), pH 7.4, 150 mM NaCl, 0.05% Sodium Azide and 40% glycerol

研究领域: Signal Transduction

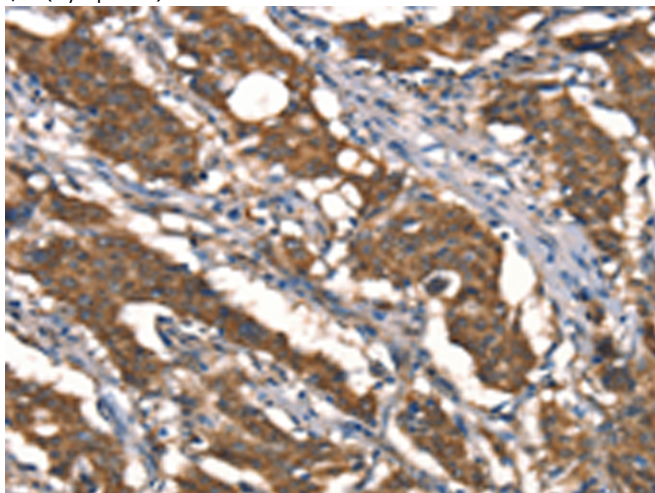
储存和运输: Store at -20°C. Avoid repeated freezing and thawing



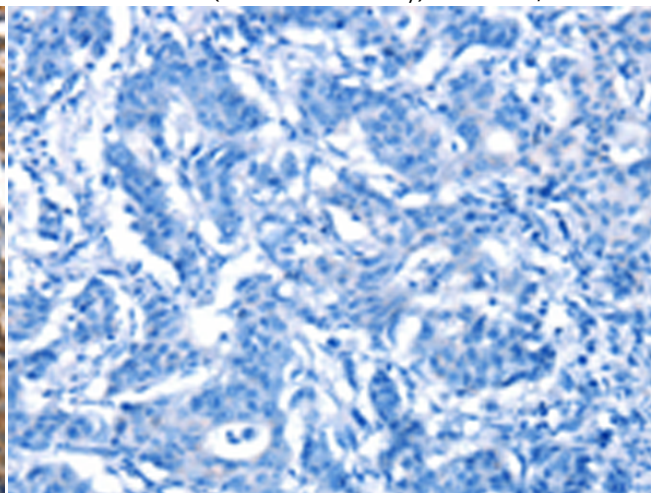
Immunohistochemistry analysis of paraffin embedded Human liver cancer tissue using 220492(DAAMI Antibody) at a dilution of 1/40(Cytoplasm).



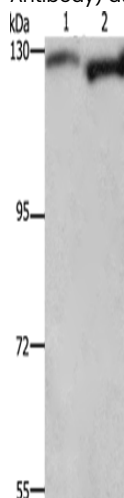
In comparison with the IHC on the left, the same paraffin-embedded Human liver cancer tissue is first treated with the synthetic peptide and then with 220492(Anti-DAAMI Antibody) at dilution 1/40.



The image on the left is immunohistochemistry of paraffin-embedded Human gastric cancer tissue using 220492(Anti-DAAMI Antibody) at a dilution of 1/40.



In comparison with the IHC on the left, the same paraffin-embedded Human gastric cancer tissue is first treated with synthetic peptide and then with D261605(Anti-DAAMI Antibody) at dilution 1/40.



Gel: 6%SDS-PAGE, Lysate: 40 µg;
Lane 1-2: HeLa cells, 293T cells;
Primary antibody: 220492(DAAMI Antibody) at dilution 1/350;
Secondary antibody: Goat anti rabbit IgG at 1/8000 dilution;
Exposure time: 1 minute



Product Description

Pioneering GTPase and Oncogene Product Development since 2010
