

CYTOKERATIN 8 RABBIT PAB

货号: N225997

产品全名: Cytokeratin 8 兔多抗

基因符号 KRT8; CYK8; Keratin; type II cytoskeletal 8; Cytokeratin-8; CK-8; Keratin-8; K8; Type-II keratin Kb8

UNIPROT ID: P05787

背景: Together with KRT19, helps to link the contractile apparatus to dystrophin at the costameres of striated muscle. K8 a type II cytoskeletal keratin. The keratins are intermediate filament proteins responsible for the structural integrity of epithelial cells and are subdivided into cytokeratins and hair keratins.

抗原: A synthetic peptide of human Cytokeratin 8

经过测试的应用: WB,IHC-F,IHC-P,ICC/IF,FC,IP

推荐稀释比: WB: 1/500-1/1000 IHC: 1/50-1/100 IF: 1/50-1/200 IP: 1/20 FC: 1/50-1/100

种属反应性: Rabbit

克隆性: Rabbit Polyclonal

分子量: Calculated MW: 54 kDa; Observed MW: 54 kDa

亚型: IgG

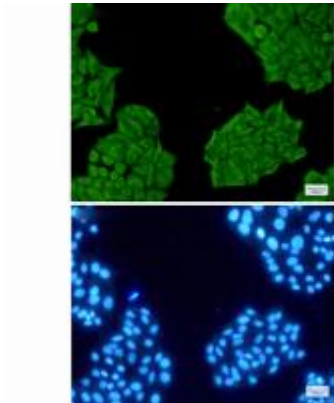
纯化: Affinity Purified

种属反应性: Human,Mouse

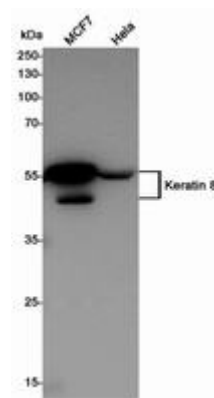
成分: PBS (without Mg²⁺ and Ca²⁺), pH 7.3 containing 50% glycerol, 0.5% BSA and 0.02% sodium azide

研究领域: Signal Transduction

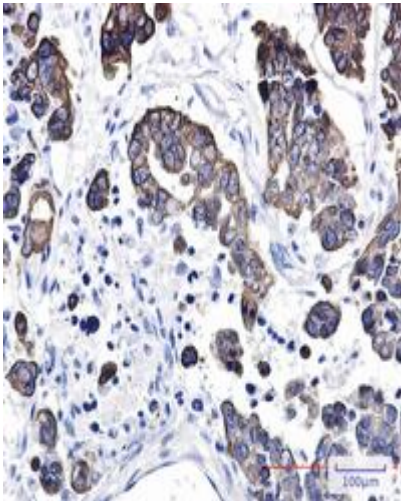
储存和运输: Store at -20°C. Avoid repeated freezing and thawing



Immunocytochemistry analysis of Cytokeratin 8 (green) in Hela using Cytokeratin 8 antibody, and DAPI (blue)



Western blot analysis of Keratin 8 in MCF-7, Hela lysates using Cytokeratin 8 antibody.



Immunohistochemistry analysis of paraffin-embedded Human Cholangiocarcinoma using Cytokeratin 8 antibody. High-pressure and temperature Sodium Citrate pH 6.0 was used for antigen retrieval.