

CYTOCHROME P450 REDUCTASE RABBIT MAB

货号: N262102

产品全名: Cytochrome P450 Reductase 兔单克隆抗体

基因符号 CPR; CYPOR; P450R; por

UNIPROT ID: P16435

背景: This enzyme is required for electron transfer from NADP to cytochrome P450 in microsomes. It can also provide electron transfer to heme oxygenase and cytochrome B5.

抗原: A synthetic peptide of human Cytochrome P450 Reductase

经过测试的应用: WB,IHC-F,IHC-P,ICC/IF

推荐稀释比: WB: 1/500-1/1000 IHC: 1/50-1/100 IF: 1/50-1/200

种属反应性: Rabbit

克隆性: Rabbit Monoclonal

克隆编号: R05-9D4

分子量: Calculated MW: 77 kDa; Observed MW: 77 kDa

亚型: IgG

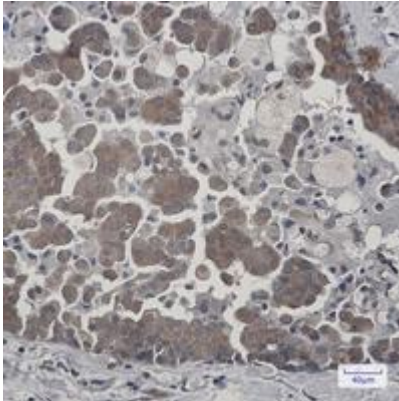
纯化: Affinity Purified

种属反应性: Human, Mouse and Rat

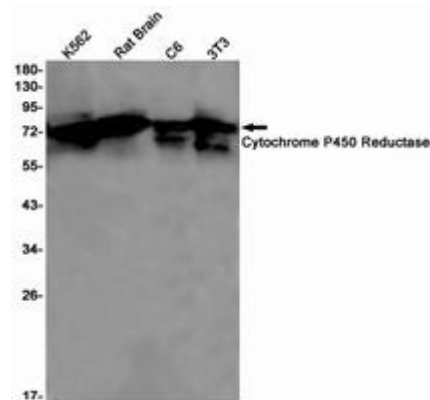
成分: PBS (without Mg²⁺ and Ca²⁺), pH 7.3 containing 50% glycerol, 0.5% BSA and 0.02% sodium azide

研究领域: Cardiovascular

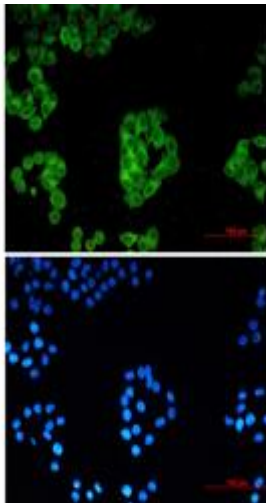
储存和运输: Store at -20°C. Avoid repeated freezing and thawing



Immunohistochemistry analysis of paraffin-embedded Human breast cancer using Cytochrome P450 Reductase antibody. High-pressure and temperature Sodium Citrate pH 6.0 was used for antigen retrieval.



Western blot analysis of Cytochrome P450 Reductase in K562, rat Brain, C6, 3T3 lysates using Cytochrome P450 Reductase antibody.



Immunocytochemistry analysis of Cytochrome P450 Reductase (green) in HeLa using Cytochrome P450 Reductase antibody, and DAPI (blue)