

## CYTOCHROME P450 2D6 RABBIT MAB

货号: N263291

产品全名: Cytochrome P450 2D6 兔单克隆抗体

基因符号 CYP2D6; CYP2DL1; Cytochrome P450 2D6; CYP11D6;  
Cytochrome P450-DB1; Debrisoquine 4-hydroxylase

**UNIPROT ID:** P10635

背景: Cytochrome P450 2D6 is a member of the cytochrome P450 superfamily of enzymes. The cytochrome P450 proteins are monooxygenases which catalyze many reactions involved in drug metabolism and synthesis of cholesterol, steroids and other lipids.

抗原: Recombinant protein of human CYP2D6

经过测试的应用: WB,IHC-F,IHC-P,ICC/IF

推荐稀释比: WB: 1/500-1/1000 IHC: 1/50-1/100 IF: 1/50-1/200

种属反应性: Rabbit

克隆性: Rabbit Monoclonal

克隆编号: R07-3G8

分子量: Calculated MW: 56 kDa; Observed MW: 50 kDa

亚型: IgG

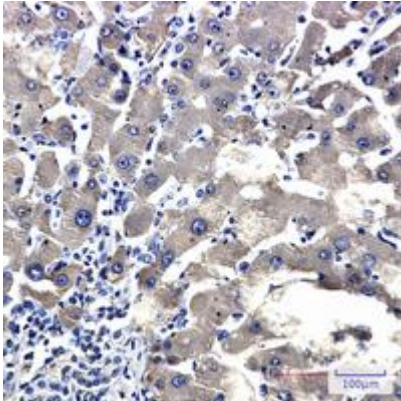
纯化: Affinity Purified

种属反应性: Human

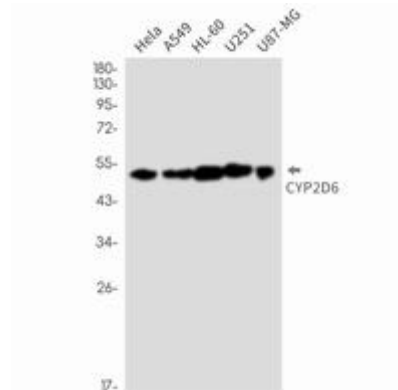
成分: PBS (without Mg<sup>2+</sup> and Ca<sup>2+</sup>), pH 7.3 containing 50% glycerol, 0.5% BSA and 0.02% sodium azide

研究领域: Cardiovascular

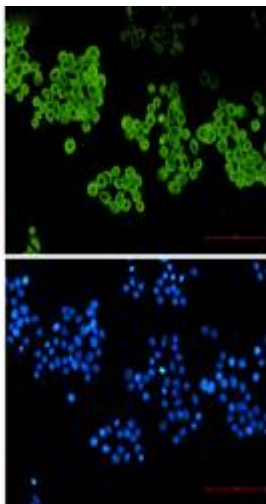
储存和运输: Store at -20°C. Avoid repeated freezing and thawing



Immunohistochemistry analysis of paraffin-embedded liver cancer using CYP2D6 antibody. High-pressure and temperature Sodium Citrate pH 6.0 was used for antigen retrieval.



Western blot analysis of CYP2D6 in HeLa, A549, HL-60, U251, U87-MG lysates using Cytochrome P450 2D6 antibody.



Immunocytochemistry analysis of CYP2D6 (green) in HeLa using CYP2D6 antibody, and DAPI (blue)