

CYTOCHROME P450 17A1 RABBIT MAB

货号: N262101

产品全名: Cytochrome P450 17A1 兔单克隆抗体

基因符号 CPT7; CYP17; P450C17; S17AH; CYP17A1

UNIPROT ID: P05093

背景: Conversion of pregnenolone and progesterone to their 17-alpha-hydroxylated products and subsequently to dehydroepiandrosterone (DHEA) and androstenedione.

抗原: A synthetic peptide of human Cytochrome P450 17A1

经过测试的应用: WB,IHC-F,IHC-P,ICC/IF,IP

推荐稀释比: WB: 1/500-1/1000 IHC: 1/50-1/100 IF: 1/50-1/200 IP: 1/20

种属反应性: Rabbit

克隆性: Rabbit Monoclonal

克隆编号: R08-2J5

分子量: Calculated MW: 57 kDa; Observed MW: 57 kDa

亚型: IgG

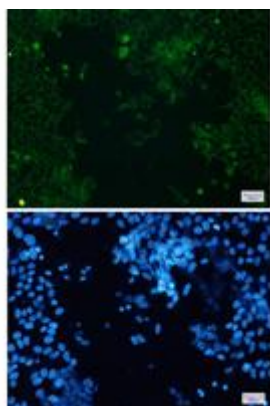
纯化: Affinity Purified

种属反应性: Human, Mouse and Rat

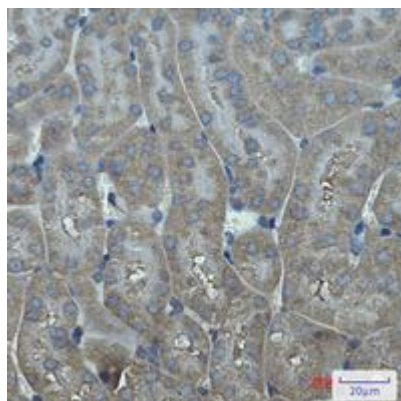
成分: PBS (without Mg²⁺ and Ca²⁺), pH 7.3 containing 50% glycerol, 0.5% BSA and 0.02% sodium azide

研究领域: Cardiovascular

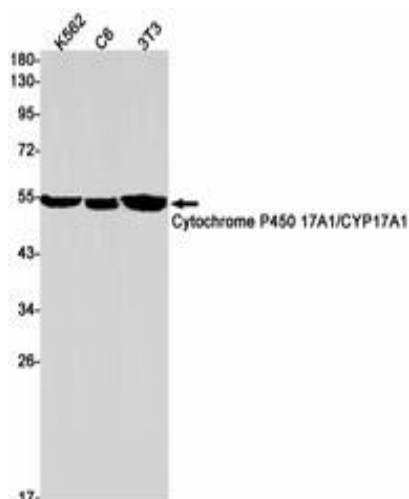
储存和运输: Store at -20°C. Avoid repeated freezing and thawing



Immunocytochemistry analysis of Cytochrome P450 17A1 (green) in Hela cells using Cytochrome P450 17A1 antibody, and DAPI (blue)



Immunohistochemistry analysis of paraffin-embedded mouse kidney using Cytochrome P450 17A1 antibody. High-pressure and temperature Sodium Citrate pH 6.0 was used for antigen retrieval.



Western blot analysis of Cytochrome P450 17A1/CYP17A1 in K562, C6, 3T3 lysates using Cytochrome P450 17A1/CYP17A1 antibody.