

## CYTOCHROME C RABBIT PAB

货号: N225671

产品全名: Cytochrome C 兔多抗

基因符号 CYCS; CYC; Cytochrome c

**UNIPROT ID:** P99999

**背景:** CYCS Electron carrier protein. The oxidized form of the cytochrome c heme group can accept an electron from the heme group of the cytochrome c1 subunit of cytochrome reductase. Cytochrome c then transfers this electron to the cytochrome oxidase complex, the final protein carrier in the mitochondrial electron-transport chain.

**抗原:** A synthesized peptide derived from human Cytochrome C

**经过测试的应用:** WB,IHC-P,IP

**推荐稀释比:** WB: 1/500-1/1000 IHC: 1/50-1/100 IP: 1/20

**种属反应性:** Rabbit

**克隆性:** Rabbit Polyclonal

**分子量:** Calculated MW: 12 kDa; Observed MW: 15 kDa

**亚型:** IgG

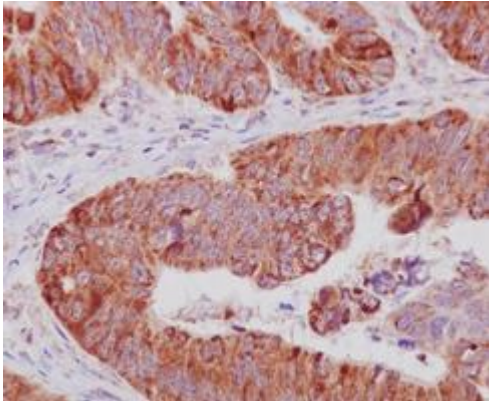
**纯化:** Affinity Chromatography

**种属反应性:** Human, Mouse and Rat

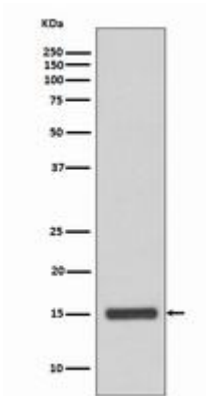
**成分:** PBS (without Mg<sup>2+</sup> and Ca<sup>2+</sup>), pH 7.3 containing 50% glycerol, 0.5% BSA and 0.02% sodium azide

**研究领域:** Cardiovascular

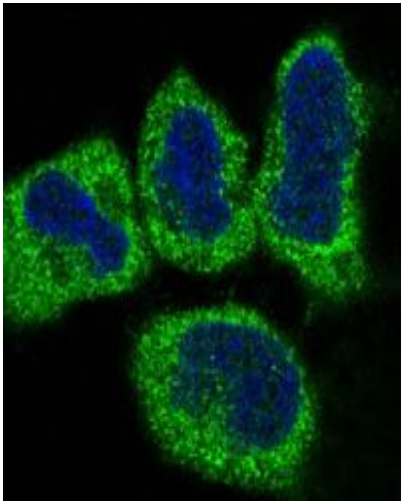
**储存和运输:** Store at -20°C. Avoid repeated freezing and thawing



Immunohistochemistry analysis of paraffin-embedded Human colonic cancer using Cytochrome C antibody. High-pressure and temperature Sodium Citrate pH 6.0 was used for antigen retrieval.



Western blot analysis of Cytochrome C in HeLa lysates using Cytochrome C antibody.



Immunofluorescence analysis of Cytochrome C in HeLa using Cytochrome C antibody.