

CYTOCHROME B RABBIT PAB

货号: N225235

产品全名: Cytochrome B 兔多抗

基因符号 Cytochrome b (Complex III subunit 3; Complex III subunit III; Cytochrome b-c1 complex subunit 3; Ubiquinol-cytochrome-c reductase complex cytochrome b subunit)

UNIPROT ID: P00156

背景: Component of the ubiquinol-cytochrome c reductase complex (complex III or cytochrome b-c1 complex) that is part of the mitochondrial respiratory chain.

抗原: Synthesized peptide derived from human Cytochrome b. at AA range: 331-380

经过测试的应用: WB,ELISA

推荐稀释比: WB: 1/500-1/1000 ELISA: 1/10000

种属反应性: Rabbit

克隆性: Rabbit Polyclonal

分子量: Calculated MW: 43 kDa; Observed MW: 48 kDa

亚型: IgG

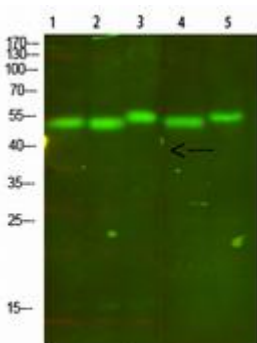
纯化: Affinity Purified

种属反应性: Human,Mouse

成分: PBS (without Mg²⁺ and Ca²⁺), pH 7.3 containing 50% glycerol, 0.5% BSA and 0.02% sodium azide

研究领域: Signal Transduction

储存和运输: Store at -20°C. Avoid repeated freezing and thawing



Western blot analysis of Cytochrome B in mouse lung, mouse brain 3, mouse spleen 4, mouse kidney 5, mouse heart lysates using Cytochrome B antibody.



Product Description

Pioneering GTPase and Oncogene Product Development since 2010
