

CYP24A1 RABBIT PAB

货号: S222354

产品全名: CYP24A1 兔多抗

基因符号: CP24; HCAI; CYP24; HCINFI; P450-CC24

UNIPROT ID: Q07973 (Gene Accession - NP_000773)

背景: This gene encodes a member of the cytochrome P450 superfamily of enzymes. The cytochrome P450 proteins are monooxygenases which catalyze many reactions involved in drug metabolism and synthesis of cholesterol, steroids and other lipids. This mitochondrial protein initiates the degradation of 1,25-dihydroxyvitamin D₃, the physiologically active form of vitamin D₃, by hydroxylation of the side chain. In regulating the level of vitamin D₃, this enzyme plays a role in calcium homeostasis and the vitamin D endocrine system. Alternatively spliced transcript variants encoding different isoforms have been found for this gene.

抗原: Synthetic peptide of human CYP24A1

经过测试的应用: ELISA, IHC

推荐稀释比: IHC: 50-200; ELISA: 5000-10000

种属反应性: Rabbit

克隆性: Rabbit Polyclonal

亚型: Immunogen-specific rabbit IgG

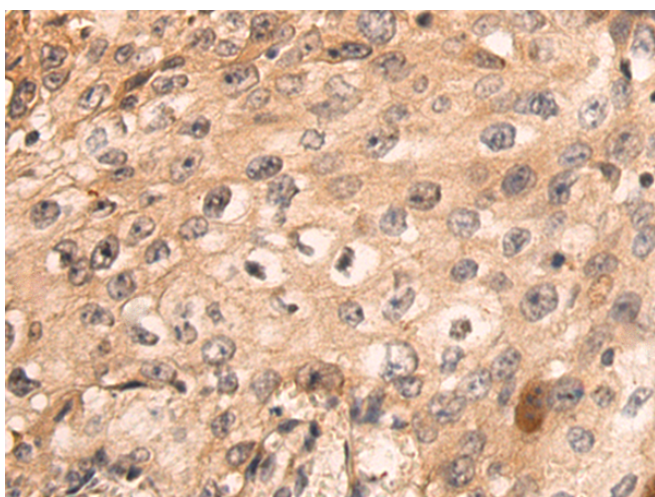
纯化: Antigen affinity purification

种属反应性: Human, Rat

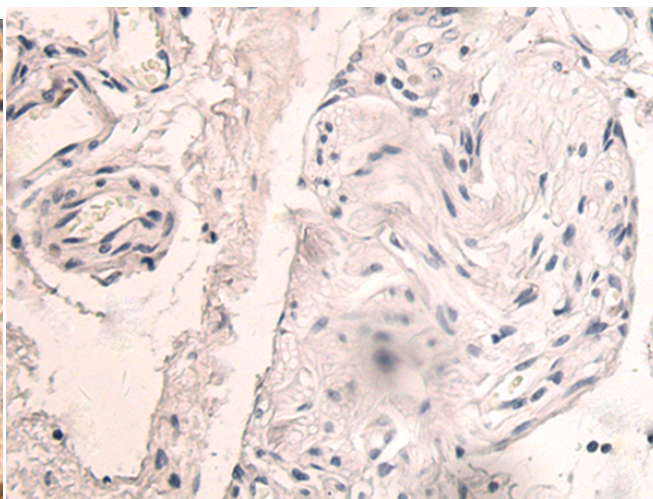
成分: PBS (without Mg²⁺ and Ca²⁺), pH 7.4, 150 mM NaCl, 0.05% Sodium Azide and 40% glycerol

研究领域: Cardiovascular, Metabolism, Cancer

储存和运输: Store at -20°C. Avoid repeated freezing and thawing



Immunohistochemistry analysis of paraffin embedded Human esophagus cancer tissue using 222354 (CYP24A1 Antibody) at a dilution of 1/60 (Mitochondrion).



In comparison with the IHC on the left, the same paraffin-embedded Human esophagus cancer tissue is first treated with the synthetic peptide and then with 222354 (Anti-CYP24A1 Antibody) at dilution 1/60.