

CYCS RABBIT PAB

货号: S216463

产品全名: CYCS 兔多抗

基因符号: CYC; HCS; THC4

UNIPROT ID: P99999 (Gene Accession - BC015130)

背景: This gene encodes a small heme protein that functions as a central component of the electron transport chain in mitochondria. The encoded protein associates with the inner membrane of the mitochondrion where it accepts electrons from cytochrome b and transfers them to the cytochrome oxidase complex. This protein is also involved in initiation of apoptosis. Mutations in this gene are associated with autosomal dominant nonsyndromic thrombocytopenia. Numerous processed pseudogenes of this gene are found throughout the human genome.

抗原: Fusion protein of human CYCS

经过测试的应用: ELISA, WB, IHC

推荐稀释比: IHC: 100-300; WB: 500-2000; ELISA: 2000-10000

种属反应性: Rabbit

克隆性: Rabbit Polyclonal

亚型: Immunogen-specific rabbit IgG

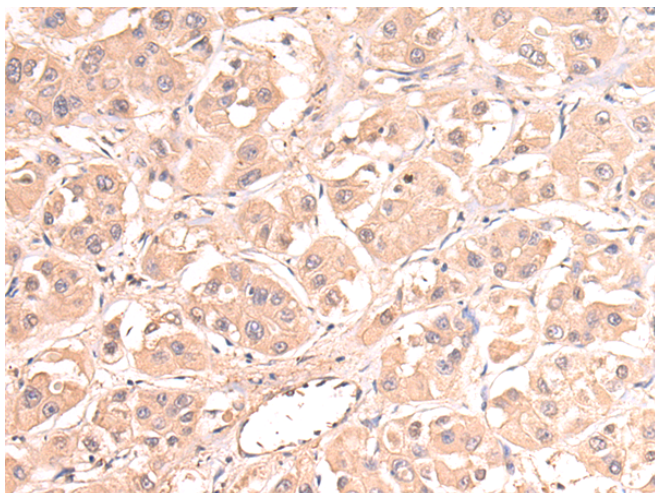
纯化: Antigen affinity purification

种属反应性: Human, Mouse, Rat

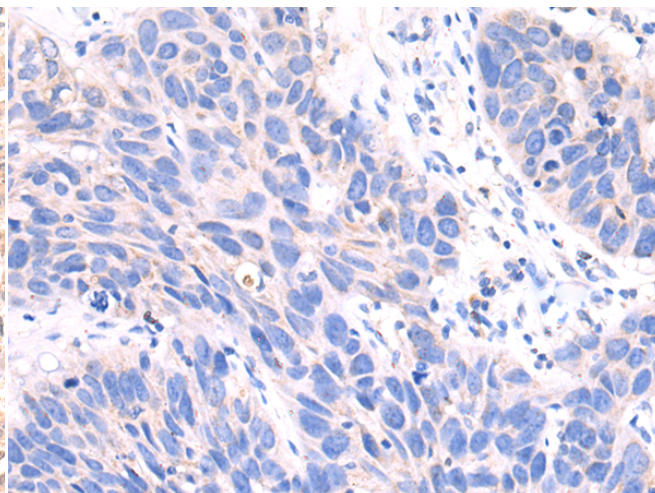
成分: PBS (without Mg²⁺ and Ca²⁺), pH 7.4, 150 mM NaCl, 0.05% Sodium Azide and 40% glycerol

研究领域: Metabolism, Cancer, Cardiovascular

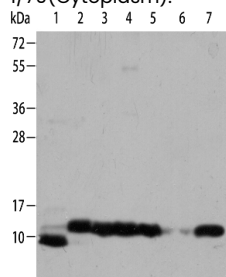
储存和运输: Store at -20°C. Avoid repeated freezing and thawing



Immunohistochemistry analysis of paraffin-embedded Human colon cancer tissue using 216463(CYCS Antibody) at a dilution of 1/70(Cytoplasm).



Immunohistochemistry analysis of paraffin-embedded Human gastric cancer tissue using 216463(Anti-CYCS Antibody) at a dilution of 1/70.



Gel: 8%SDS-PAGE, Lysate: 40 µg;
Lane 1-7: Hela cells, K562 cells, mouse brain tissue, Mouse heart tissue, Mouse kidney tissue, PC3 cells, Jurkat cells;
Primary antibody: 216463(CYCS Antibody) at dilution 1/700;
Secondary antibody: Goat anti rabbit IgG at 1/8000 dilution;
Exposure time: 5 seconds