

CYCLIN T1 RABBIT MAB

货号: N262093

产品全名: Cyclin T1 兔单克隆抗体

基因符号 CCNT; CYCT1; HIVE1

UNIPROT ID: O60563

背景: Regulatory subunit of the cyclin-dependent kinase pair (CDK9/cyclin-T1) complex, also called positive transcription elongation factor B (P-TEFb), which is proposed to facilitate the transition from abortive to productive elongation by phosphorylating the CTD (carboxy-terminal domain) of the large subunit of RNA polymerase II (RNA Pol II).

抗原: Recombinant protein of human Cyclin T1

经过测试的应用: WB,IHC-F,IHC-P,ICC/IF,IP

推荐稀释比: WB: 1/500-1/1000 IHC: 1/50-1/100 IF: 1/50-1/200 IP: 1/20

种属反应性: Rabbit

克隆性: Rabbit Monoclonal

克隆编号: R04-1G1

分子量: Calculated MW: 81 kDa; Observed MW: 81 kDa

亚型: IgG

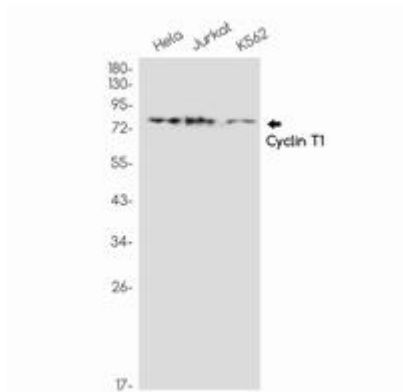
纯化: Affinity Purified

种属反应性: Human, Mouse and Rat

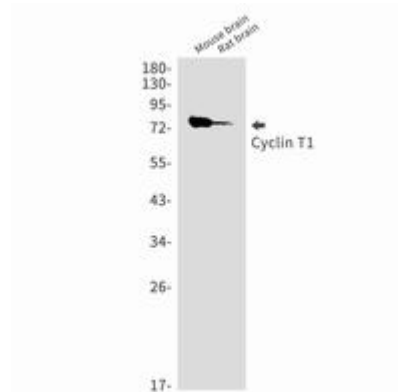
成分: PBS (without Mg²⁺ and Ca²⁺), pH 7.3 containing 50% glycerol, 0.5% BSA and 0.02% sodium azide

研究领域: Microbiology

储存和运输: Store at -20°C. Avoid repeated freezing and thawing



Western blot analysis of Cyclin T1 in Hela, Jurkat, K562 lysates using Cyclin T1 antibody.



Western blot analysis of Cyclin T1 in mouse brain, rat brain lysates using Cyclin T1 antibody.