

## CYCLIN E2 RABBIT PAB

货号: N225660

产品全名: Cyclin E2 兔多抗

基因符号 CCNE2; G1/S-specific cyclin-E2

**UNIPROT ID:** O96020

**背景:** The human Cyclin E2 gene encodes a 404 amino acid protein that is most closely related to Cyclin E. Cyclin E2 mRNA levels peaks at the G1 / S transition. Cyclin E2 associates with Cdk2 in a functional kinase complex that is inhibited by both p27 (Kip1) and p21 (Cip1). Cyclin E2 / Cdk2 phosphorylates histone H1 in vitro. G1 cyclin E controls the initiation of DNA synthesis by activating CDK2. Abnormally high levels of cyclin E expression have frequently been observed in human cancers.

**抗原:** A synthesized peptide derived from human Cyclin E2

**经过测试的应用:** WB,IHC-P,ICC/IF,IP

**推荐稀释比:** WB: 1/500-1/1000 IHC: 1/50-1/100 IF: 1/50-1/200 IP: 1/20

**种属反应性:** Rabbit

**克隆性:** Rabbit Polyclonal

**分子量:** Calculated MW: 47 kDa; Observed MW: 50 kDa

**亚型:** IgG

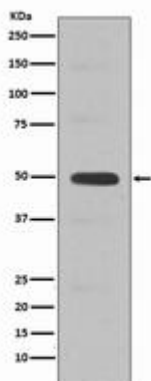
**纯化:** Affinity Chromatography

**种属反应性:** Human

**成分:** PBS (without Mg<sup>2+</sup> and Ca<sup>2+</sup>), pH 7.3 containing 50% glycerol, 0.5% BSA and 0.02% sodium azide

**研究领域:** Cell Biology

**储存和运输:** Store at -20°C. Avoid repeated freezing and thawing



Western blot analysis of Cyclin E2 in Jurkat lysates using Cyclin E2 antibody.



# Product Description

Pioneering GTPase and Oncogene Product Development since 2010

---