

CYCLIN E1 RABBIT PAB

货号: N225355

产品全名: Cyclin E1 兔多抗

基因符号 CCNE1; CCNE; G1/S-specific cyclin-E1

UNIPROT ID: P24864

背景: Essential for the control of the cell cycle at the G1/S (start) transition. a member of the highly conserved cyclin family, whose members are characterized by a dramatic periodicity in protein abundance through the cell cycle. Cyclins function as regulators of CDK kinases.

抗原: The antiserum was produced against synthesized peptide derived from human Cyclin E1. AA range:91-140

经过测试的应用: WB,IHC-F,IHC-P,ICC/IF,ELISA

推荐稀释比: WB: 1/500-1/1000 IHC: 1/50-1/100 IF: 1/50-1/200 ELISA: 1/10000

种属反应性: Rabbit

克隆性: Rabbit Polyclonal

分子量: Calculated MW: 47 kDa; Observed MW: 47 kDa

亚型: IgG

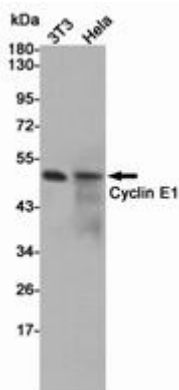
纯化: Affinity Purified

种属反应性: Human, Mouse and Rat

成分: PBS (without Mg²⁺ and Ca²⁺), pH 7.3 containing 50% glycerol, 0.5% BSA and 0.02% sodium azide

研究领域: Cell Biology

储存和运输: Store at -20°C. Avoid repeated freezing and thawing



Western blot analysis of Cyclin E1 in 3T3 and HeLa lysates using Cyclin E1 antibody.



Product Description

Pioneering GTPase and Oncogene Product Development since 2010
