

## CYCLIN D1 RABBIT PAB

货号: N225992

产品全名: Cyclin D1 兔多抗

基因符号 CCND1; BCL1; DIIS287E; PRAD1; U21B31; Cyclin D1

**UNIPROT ID:** P24385

背景: Phosphorylation of RB1 allows dissociation of the transcription factor E2F from the RB/E2F complex and the subsequent transcription of E2F target genes which are responsible for the progression through the G1 phase. Hypophosphorylates RB1 in early G1 phase. Cyclin D-CDK4 complexes are major integrators of various mitogenic and antimitogenic signals.

抗原: A synthetic peptide of human Cyclin D1

经过测试的应用: WB,IHC-P,IP

推荐稀释比: WB: 1/500-1/1000 IHC: 1/50-1/100 IP: 1/20

种属反应性: Rabbit

克隆性: Rabbit Polyclonal

分子量: Calculated MW: 34 kDa; Observed MW: 34 kDa

亚型: IgG

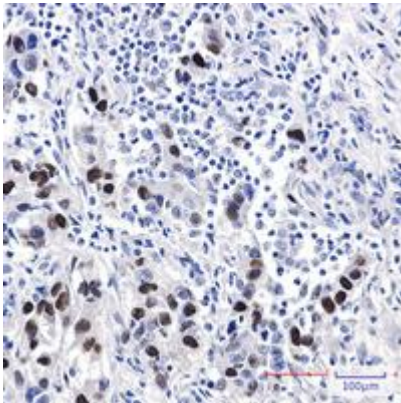
纯化: Affinity Purified

种属反应性: Human, Mouse and Rat

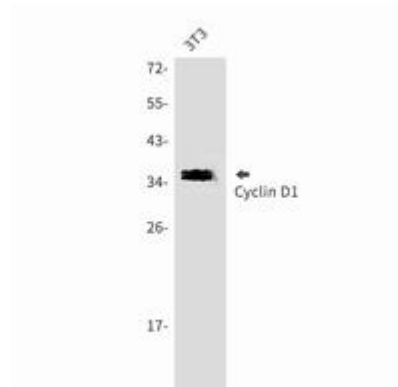
成分: PBS (without Mg<sup>2+</sup> and Ca<sup>2+</sup>), pH 7.3 containing 50% glycerol, 0.5% BSA and 0.02% sodium azide

研究领域: Cell Biology

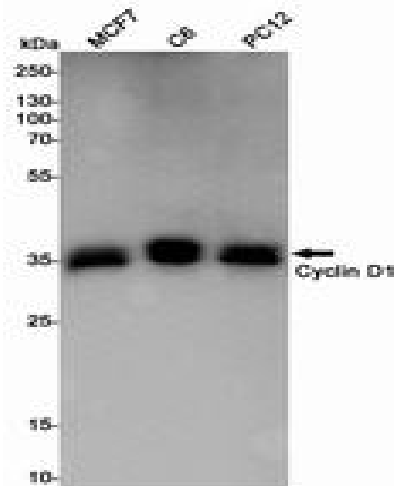
储存和运输: Store at -20°C. Avoid repeated freezing and thawing



Immunohistochemistry analysis of paraffin-embedded Human lung cancer using Cyclin D1 antibody. High-pressure and temperature Sodium Citrate pH 6.0 was used for antigen retrieval.



Western blot analysis of Cyclin D1 in 3T3 lysates using Cyclin D1 antibody.



Western blot analysis of Cyclin D1 in MCF-7, C6, PC-12 lysates using Cyclin D1 antibody.