

## CYCLIN B1 RABBIT PAB

货号: N225354

产品全名: Cyclin B1 兔多抗

基因符号 CCNB1; CCNB; G2/mitotic-specific cyclin-B1

UNIPROT ID: P14635

背景: Essential for the control of the cell cycle at the G2/M (mitosis) transition. a member of the highly conserved cyclin family, whose members are characterized by a dramatic periodicity in protein abundance through the cell cycle. Cyclins function as regulators of CDK kinases.

抗原: The antiserum was produced against synthesized peptide derived from human Cyclin B1. AA range:91-140

经过测试的应用: WB,IHC-F,IHC-P,ICC/IF,ELISA

推荐稀释比: WB: 1/500-1/1000 IHC: 1/50-1/100 IF: 1/50-1/200 ELISA: 1/10000

种属反应性: Rabbit

克隆性: Rabbit Polyclonal

分子量: Calculated MW: 48 kDa; Observed MW: 60 kDa

亚型: IgG

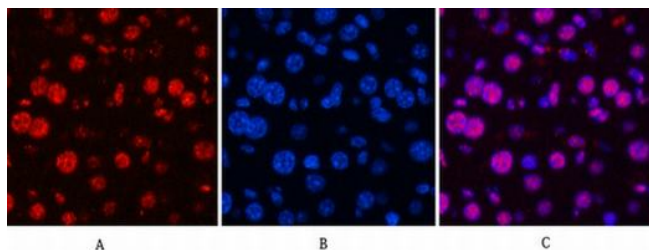
纯化: Affinity Purified

种属反应性: Human, Mouse and Rat

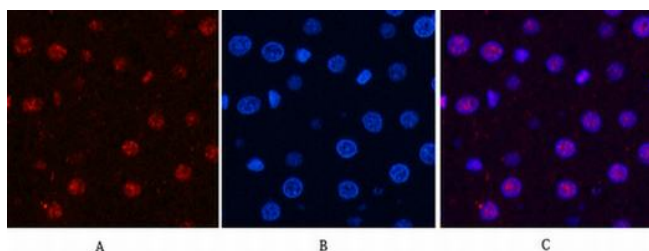
成分: PBS (without Mg<sup>2+</sup> and Ca<sup>2+</sup>), pH 7.3 containing 50% glycerol, 0.5% BSA and 0.02% sodium azide

研究领域: Cell Biology

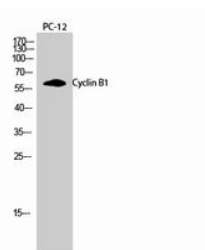
储存和运输: Store at -20°C. Avoid repeated freezing and thawing



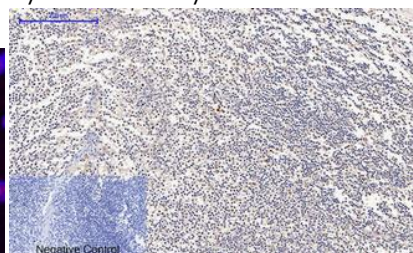
Immunofluorescence analysis of Cyclin B1 in mouse liver using Cyclin B1 antibody (red), and DAPI (blue).



Immunofluorescence analysis of Cyclin B1 in rat liver using Cyclin B1 antibody (red).



Western blot analysis of Cyclin B1 in PC-12 lysates using Cyclin B1 antibody.



Immunohistochemistry analysis of paraffin-embedded Human tonsil using Cyclin B1 antibody. High-pressure and temperature Sodium Citrate pH 6.0 was used for antigen retrieval. Negative control was used by secondary antibody only.