

## CYCLIN B1 (1B3) MOUSE MAB

货号: N261328

产品全名: Cyclin B1 (1B3) 小鼠单抗

基因符号 CCNB1; CCNB; G2/mitotic-specific cyclin-B1

**UNIPROT ID:** P14635

**背景:** Essential for the control of the cell cycle at the G2/M (mitosis) transition. a member of the highly conserved cyclin family, whose members are characterized by a dramatic periodicity in protein abundance through the cell cycle. Cyclins function as regulators of CDK kinases.

**抗原:** Synthetic peptide conjugated to KLH.

**经过测试的应用:** IHC-P

**推荐稀释比:** IHC: 1/50-1/100

**种属反应性:** Mouse

**克隆性:** Mouse Monoclonal

**克隆编号:** 1B3-3B1-1B4

**分子量:** -

**亚型:** IgG

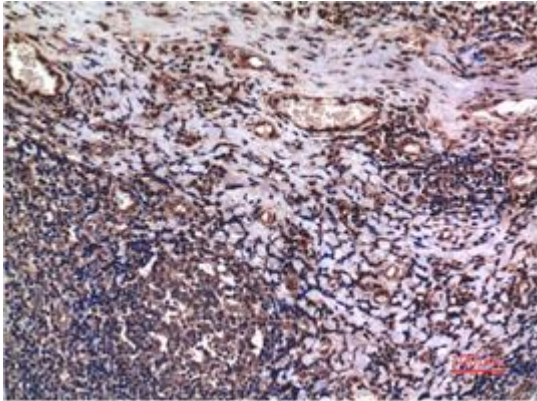
**纯化:** Affinity Purified

**种属反应性:** Human,Rat,Mouse

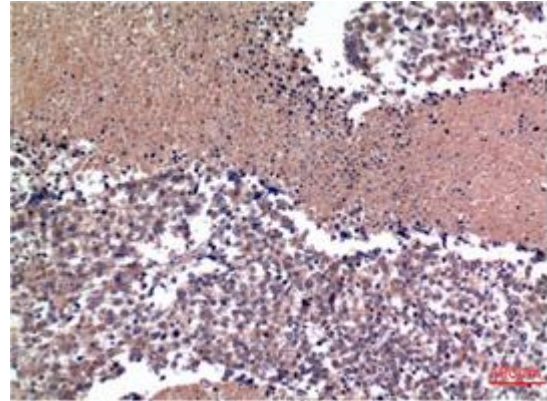
**成分:** PBS (without Mg<sup>2+</sup> and Ca<sup>2+</sup>), pH 7.3 containing 50% glycerol, 0.5% BSA and 0.02% sodium azide

**研究领域:** Cell Biology

**储存和运输:** Store at -20°C. Avoid repeated freezing and thawing



Immunohistochemical analysis of paraffin-embedded Human tonsils using Cyclin B1 (1B3) antibody. High-pressure and temperature Sodium Citrate pH 6.0 was used for antigen retrieval.



Immunohistochemistry analysis of paraffin-embedded Human Lung Carcinoma Tissue using Cyclin B1 (1B3) antibody. High-pressure and temperature Sodium Citrate pH 6.0 was used for antigen retrieval.